



United Nations

DESA
Statistics Division

Sustainable Development Goals Progress Chart 2020



Web: <https://unstats.un.org/sdgs/report/2020/progress-chart-2020.pdf>

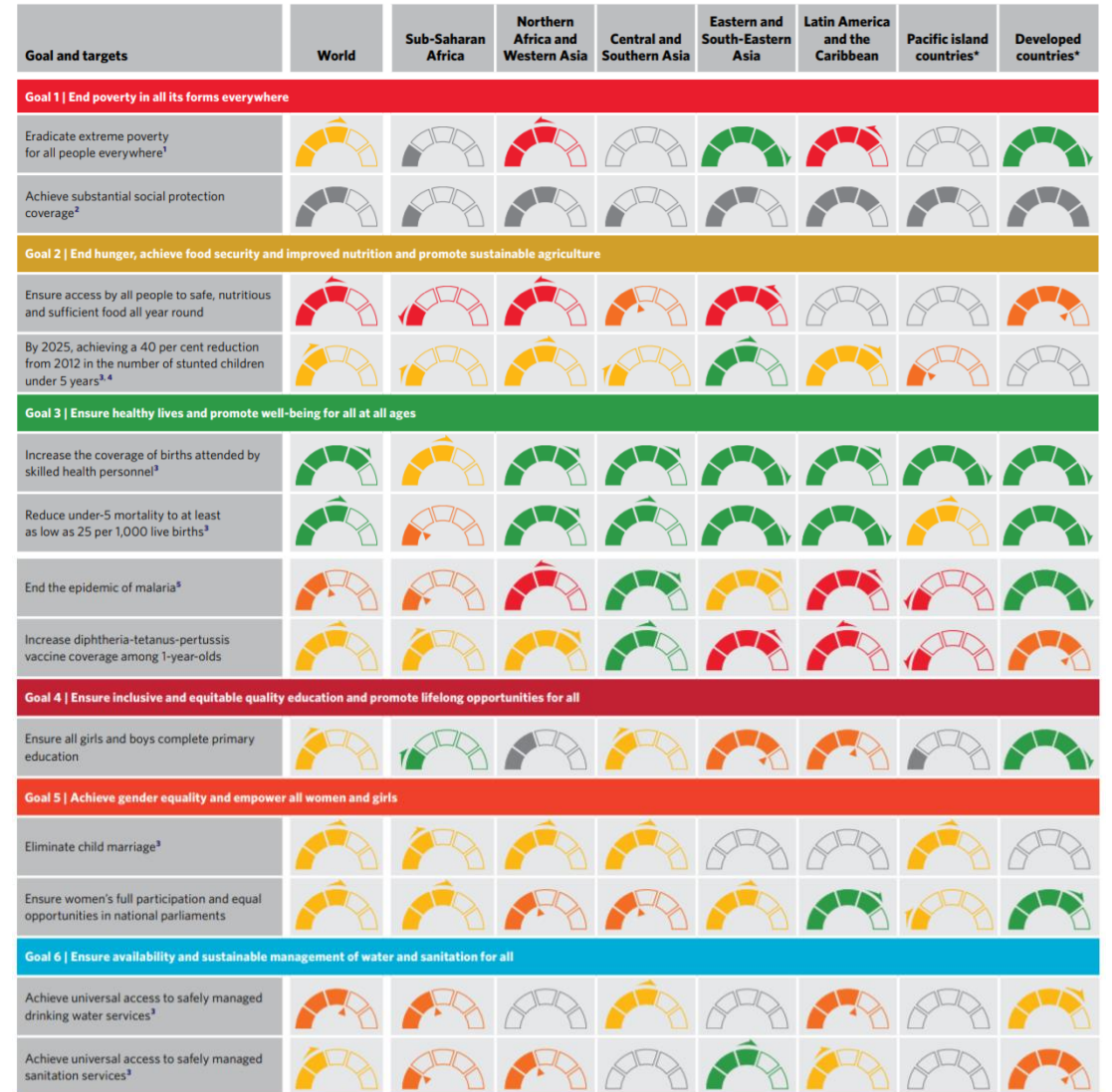
SDG Progress Chart 2020 Overview



The Sustainable Development Goals Progress Chart 2020 presents a snapshot of global and regional progress toward the SDGs through a traffic light dashboard



For most Goals, the pace of progress has been insufficient and substantial acceleration is needed.



SDG Progress Chart 2020 Overview

➤ Two types of information are presented

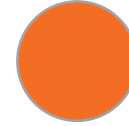
i. A trend assessment using **stoplight colours**



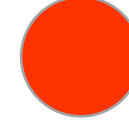
Substantial progress/
On track



Fair progress
but acceleration
needed



Limited or no
progress



Deterioration

ii. A level assessment based on the latest available data using a **gauge meter**



Target met or
almost met



Close to target



Moderate
distance to target



Far from target



Very far from
target



insufficient data

Baseline year and latest available data used in the Progress Chart

- **Baseline year:** 2015 is used for the trend assessment for most indicators. If there are no sufficient empirical data around that time, a baseline year of around 2010 is used.
- **The latest available data** for most indicators are from 2018 to 2019; for a few indicators, the data go back to 2015 and 2016.
- Much of the data used in the progress chart were compiled prior to COVID-19. The devastating impacts of the pandemics on SDGs can be found in ***The SDG Report 2020*** (<https://unstats.un.org/sdgs/report/2020/>)



General overview of the process

Establishing
Task Team on
SDG Progress
Chart

Composed of experts from around **15** regional and international agencies.

Drafting
guideline and
selecting
indicators

36 indicators selected under **17 Goals** to present the progress made in SDGs

Trend and level
assessment

A **standard methodology** developed for both progress assessments, but some agencies applied different methodology due to the nature of the indicators

Task Team on SDG Progress Chart

➤ **Background**

- i. Different methodologies for data aggregations, trend analysis, projections, and thresholds classifications were used in SDG Progress Chart 2019 (the first global SDG progress chart)
- ii. Progress Chart presentation needed to be improved

➤ **New task team established in Feb 2020**

➤ **Objectives of the Task Team**

- i. Methodology development for assessing SDG progress
- ii. Promote the harmonization of methods and instruments
- iii. Develop design of the Progress Chart
- iv. Plan and coordinate the future work of progress assessment

Indicator Selection

➤ **General criteria for indicator selection:**

- i. The relevance and importance of the indicator to the Goal
- ii. 2 to 3 indicators per goal
- iii. Tier I indicator with more than 50% country coverage and 50% population coverage for all regions
- iv. Timeliness of the indicator: with at least two data points and a baseline year (2015 or 2010)
- v. Indicators that were also included in the SDG Report 2020

Level Assessment

- Measure the distance between the current level and its target at the global and regional level
- The current level refers to the latest available data (usually in 2018 or 2019)
- Five categories below are usually considered:
 - Target met or almost met
 - Close to target
 - Moderate distance to target
 - Far from target
 - Very far from target



Target met or
almost met



Close to target



Moderate
distance to target



Far from target



Very far from
target



insufficient data

Trend assessment

- Measure the progress from a baseline year of around 2015 (or around 2010 if there is no sufficient empirical data around 2015)
- Trends are categorized with four different traffic lights as below:
 - i. Substantial Progress/on track: Green ●
 - ii. Fair progress but acceleration needed: Yellow ●
 - iii. Limited or no progress: Orange ●
 - iv. Deterioration: Red ●
- Compound Annual Growth Rate is applied as a general manner
- Two types of indicators considered in trend assessment:
 - i. Indicators without an explicit numerical target
 - ii. Indicators with an explicit numerical target

Trend assessment without an explicit numerical target

To assess the progress without an explicit numerical target, only **actual growth** is observed

- Growth rate calculation: the actual Compound Annual Growth Rate

$$CAGR_a = \left(\frac{x_{it}}{x_{i,t_0}} \right)^{\frac{1}{t-t_0}} - 1$$

- The thresholds for categorizing the progress depend on two desired directions over time:
 - Required increasing trend over time
 - Required decreasing trend over time

Trend assessment without an explicit numerical target (Continued)

- i. Threshold table for actual growth rate ($CAGR_a$): if the indicator should increase over time

Values of actual growth rate	Assessment category
$CAGR_a > 0.01$	Substantial progress/ on track
$0.005 < CAGR_a \leq 0.01$	Fair progress but acceleration needed
$-0.01 \leq CAGR_a < 0.005$	Limited or no progress
$CAGR_a < -0.01$	Deterioration

- i. Threshold table for actual growth rate ($CAGR_a$): if the indicator should decrease over time

Values of actual growth rate	Assessment category
$CAGR_a < -0.01$	Substantial progress/ on track
$-0.01 \leq CAGR_a < -0.005$	Fair progress but acceleration needed
$-0.005 < CAGR_a \leq 0.01$	Limited or no progress
$CAGR_a > 0.01$	Deterioration

Trend assessment with an explicit numerical target

To measure the progress made with an explicit numerical target, a few steps are followed:

- Calculate the **actual** Compound Annual Growth Rate ($CAGR_a$) based on the period from baseline year to current year
- Calculate the **required** Compound Annual Growth Rate ($CAGR_r$) based on the period from baseline year to 2030, the detailed calculation is shown below

$$CAGR_r = \left(\frac{x^*}{x_{t_0}} \right)^{\frac{1}{2030-t_0}} - 1$$

Trend assessment with an explicit numerical target (Continued)

- Comparing the actual vs. the required growth by calculating the ratio:

$$CR = \frac{CAGR_a}{CAGR_r}$$

- Thresholds table for CR to categorize trend into one of four colour assessments

Values of actual growth rate	Assessment category
$CR \geq 0.95$	Substantial progress/ on track
$0.50 \leq CR < 0.95$	Fair progress but acceleration needed
$-0.1 \leq CR < 0.50$	Limited or no progress
$CR < -0.1$	Deterioration



**United
Nations**

DESA
Statistics Division

Thank You!

<https://unstats.un.org/sdgs/report/2020/>