

Gender and GVCs: The Chilean Mining Industry

November 18, 2020

Penny Bamber

Senior Researcher,
Duke Global Value Chain Center
Duke University

Genero y Cadenas Globales de Valor

Jornadas de Comercio Internacional y Genero, X Seminario Comercio y Desarrollo Sostenible
Comisión Económica Para América Latina y el Caribe
Noviembre 17-19, 2020

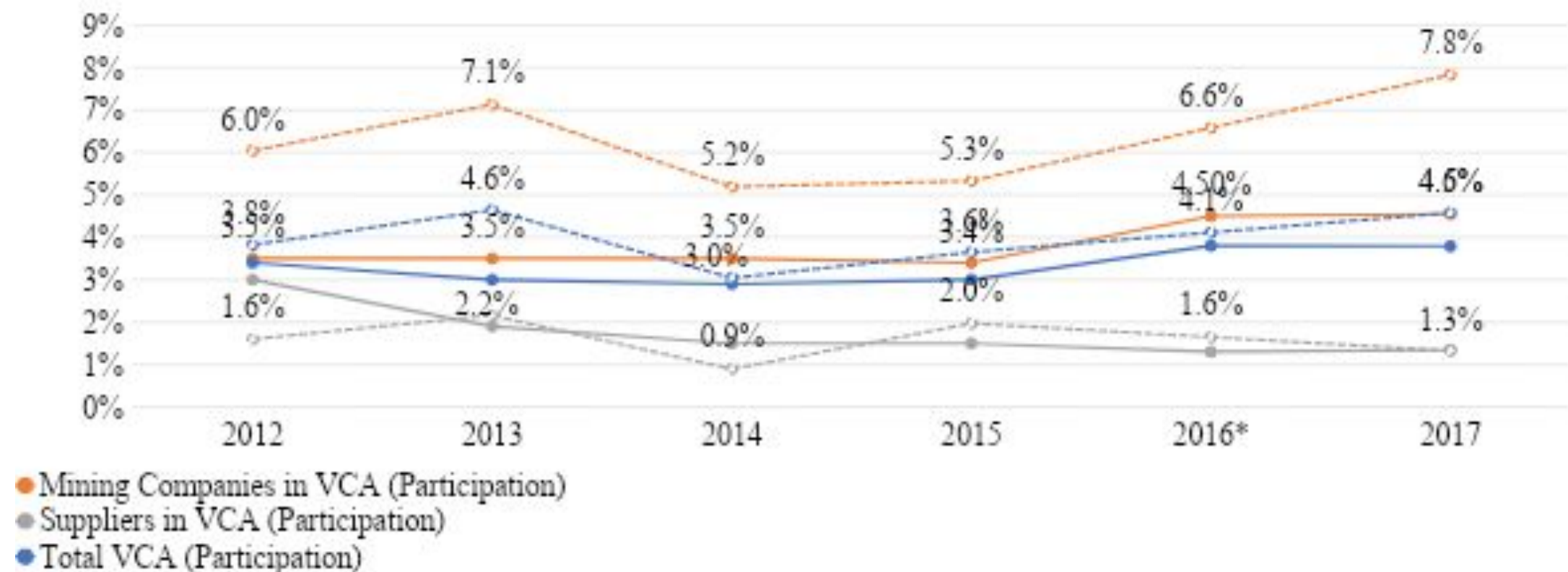
Female Participation in the Chilean Mining GVC

Time	Before 1986	1990s	2000s	2010s	Future
Mining Exports (US\$, B; mid-decade)	1,760	6,392	15,815	34,642	
Female participation	None	Very low	Begins to grow	Growth rate higher than male	
Female intensity (%)	0%	n.a.	Less than 6% 2008: 4.2%	More than 6%	
Adoption of Frontier Technologies	Manual	Mechanized	Mechanized with hydraulic power	Remote -operated	Automated
Barriers for female participation	Not legally allowed to participate in the industry	<ul style="list-style-type: none"> Physical requirement Hazardous conditions and safety risks Infrastructure complications Remote work location Gender stereotypes and norms 	<ul style="list-style-type: none"> Hazardous conditions and safety risks Infrastructure complications Remote work location Gender stereotypes and norms 	<ul style="list-style-type: none"> Mining Experience Remote work location Gender stereotypes and norms 	<ul style="list-style-type: none"> Gender stereotypes and norms
Job Site	Mine	Mine	Mine	Mine. Very few urban IOCs	Off-site. Urban centers

Source:
Authors

GVC Fragmentation – Is Low Female Participation a Supplier Problem?

Female Participation and Recruitment by Activity (%), 2012 - 2017

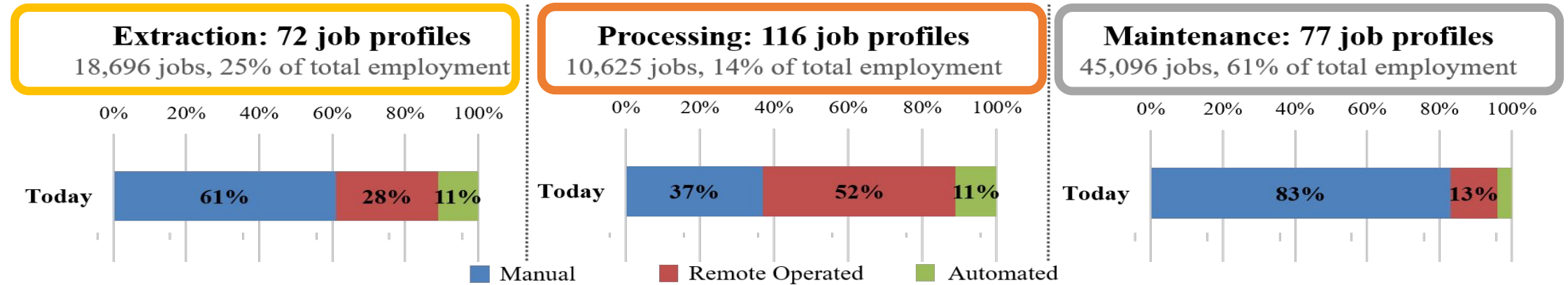


Source: Authors based on Consejo de Competencias Mineras (2017). Notes: (*) In 2016, figures of participation are equal to 2017, but data for this year was not collected; labels with VCA include all companies participating in Value Chain Activities.

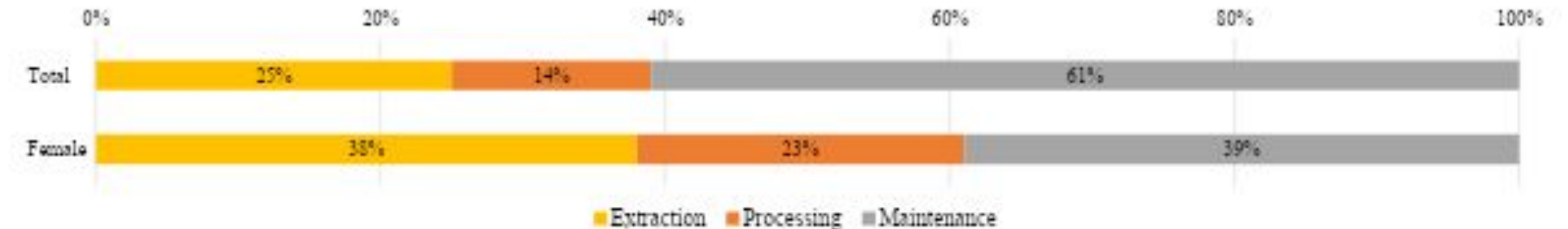
Suppliers are lagging in female inclusion – yet they account for 62% of total employment

How will digital technologies impact these gender dynamics in the (near) future?

New Technology Impacts on Job Profiles in Chile's Mining GVC, 2017



Distribution of GVC Employment by Segment, Total and Female (2017, %)



THANK YOU



Penny Bamber
Senior Researcher
Duke Global Value Chain Center

Penny.Bamber@duke.edu

gvcc.duke.edu