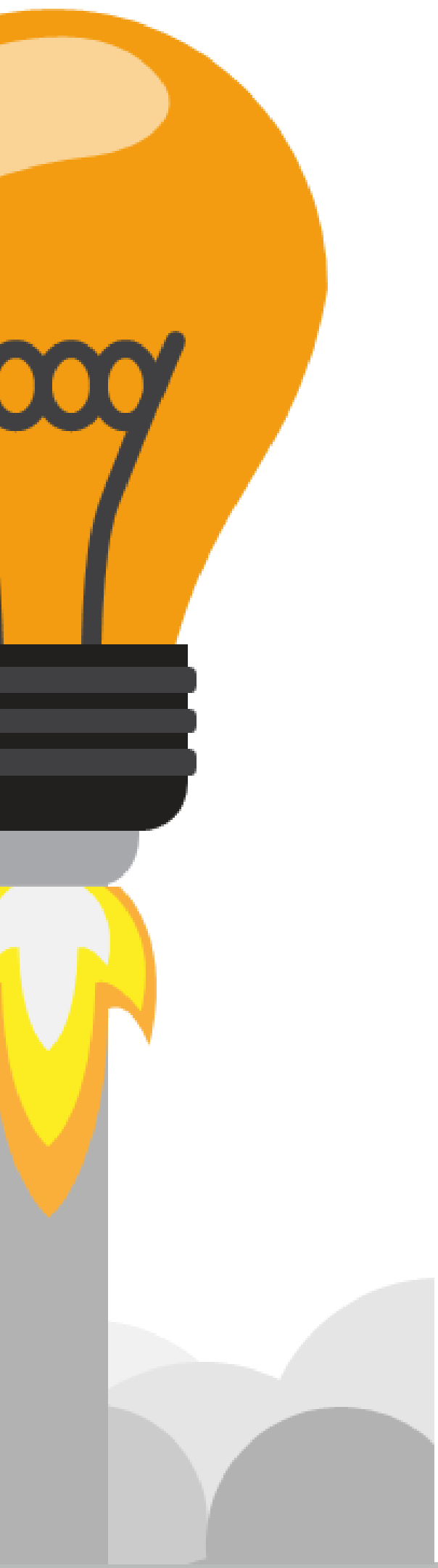




EXTENDED SUPPLY AND USE TABLES. CASE OF MEXICO

October, 2020



- A **set of tables** that describe the **magnitudes of inter-industrial flows** within the **economy**, providing information on **supply and demand** in a more **granular** way and focused on the **external sector**.
- The growing **globalization** demands statistics that provide information on the **interdependencies** between **countries** and the **impacts** on the **economies**, under this **scenario** there are **international agreements** that cover these **needs**.

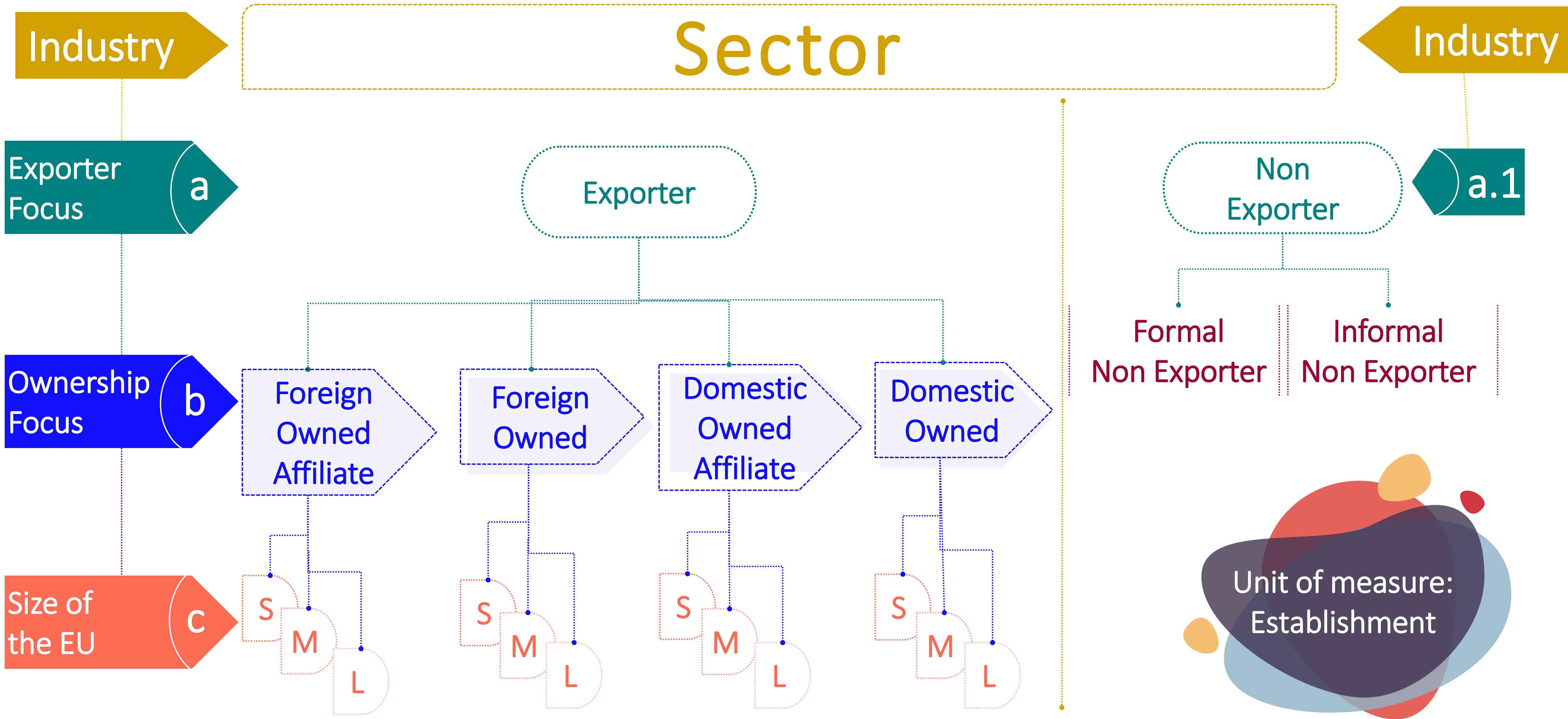
Being the **Terms of Reference**, published by the **OECD**, the **main source of information** the key objectives of this extension are:

Have an **Analysis tool** for decision makers.

Know the role of foreign affiliates, which cause **spill-over externalities** of FDI.

Know the **integration** of the EU by size in the GVC, through the **foreign owners** of economic units installed in the country.
(Integrated Profile)

Provide information for **specific studies** with a **foreign focus**.



PUBLISHED EXTENSIONS
A. EXPORTER FOCUS

This extension is classified into two large groups :

Exporters



Non Exporters

Establishments that registered transactions of **goods** and/or **services** **abroad** and in the **country**.

Establishments that registered transactions of **goods** and/or **services** in the **country**.

EU incorporated as a company or quasi-companies, which are **protected** by the **institutional legal framework**.

Unincorporated EU, owned by households that **do not have** protection of the **institutional legal framework**.

Formal Sector

Informal Sector

Supply Table

	Trade and transport margins			Taxes on the net products			Supply (basic prices)				Industry									Imports CIF	Adjustment CIF-FOB	Total Imports CIF (Total FOB)			
	Total	E	FNE	INE	Total	E	FNE	INE	Total Supply (basic prices)	Total	E	FNE	INE	Good and Services											
														Sector 1			Sector 2						Sector 3		
Industry	Product													E	FNE	INE	E	FNE	INE	E	FNE	INE			
	Sector 1																								
	Sector 2																								
	Sector 3																								

Use table

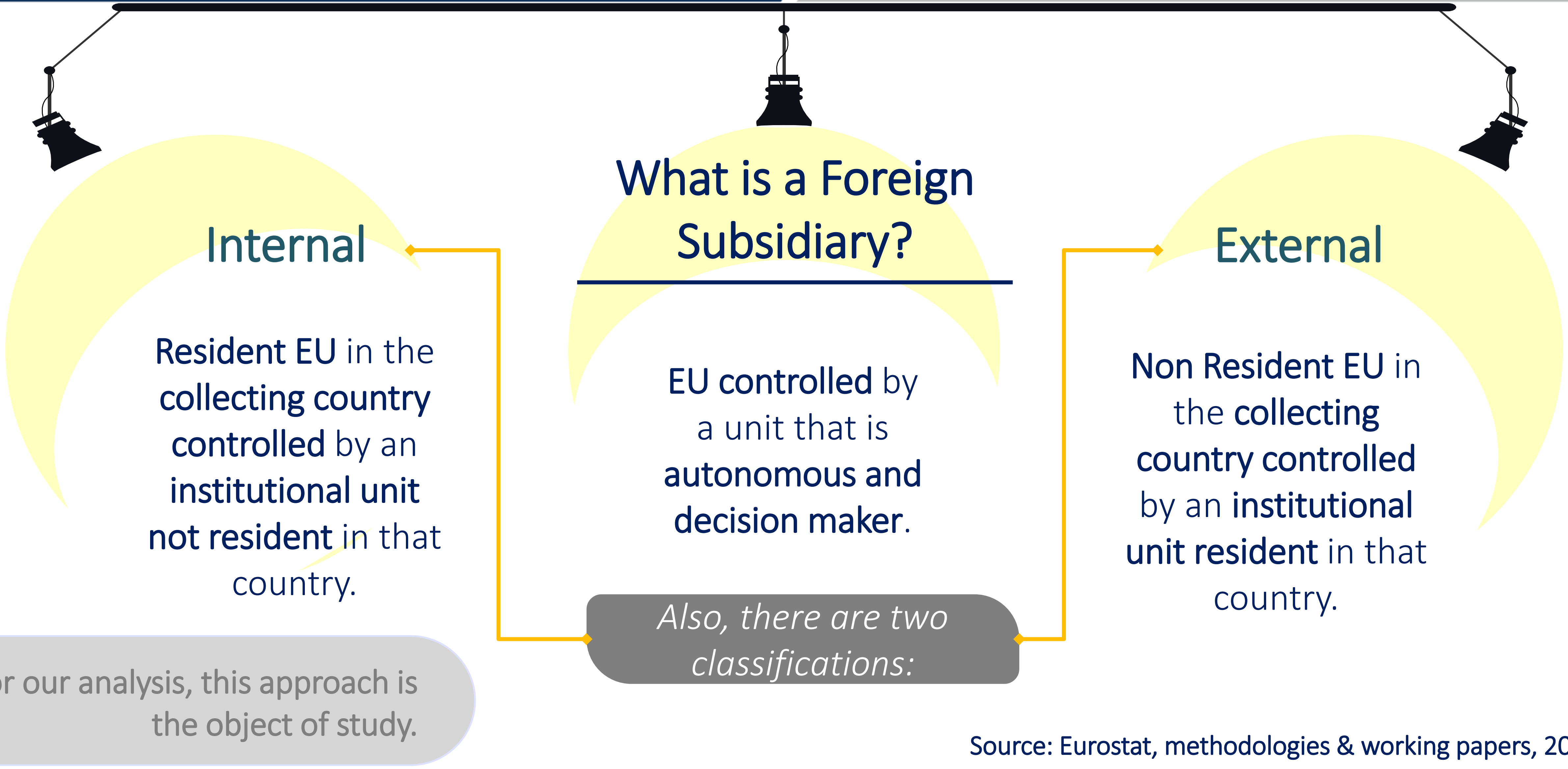
	Total Use (Purchase prices)	Intermediate Consumption									Final Demand						
		Sector 1			Sector 2			Sector 3			Household final consumption	Government Consumption	Gross fixed capital formation	Changes in Inventories	Exports	Statistical discrepancy	
		E	FNE	INE	E	FNE	INE	E	FNE	INE							
Products	Good and services																
	Sector 1																
	Sector 2																
	Sector 3																
GVA																	
Total Gross Production																	

E: Exporter
 NE: Non Exporter
 FNE: Formal Non Exporter
 INE: Informal Non Exporter



1st Level: Exporter Focus

| B. OWNERSHIP FOCUS



Source: Eurostat, methodologies & working papers, 2009.

Supply Table																										
	Total Supply (Purchase Prices)	Trade and transport margins					Taxes on the net products					Supply at basic prices					Industry				Imports CIF	Adjustment CIF- FOB	Total Imports CIF (Total FOB)			
		Total TTM	Rest of the economy	Total Exporter	DO	DOA	FO	FOA	Total taxes	Rest of the economy	Total Exporter	DO	DOA	FO	FOA	Total Supply basic prices	Rest of the economy	Total Exporter	DO	DOA				FO	FOA	Good and Services
Products																										
Good and Services	Sector 1																									
	Sector 2																									
	Sector 3																									

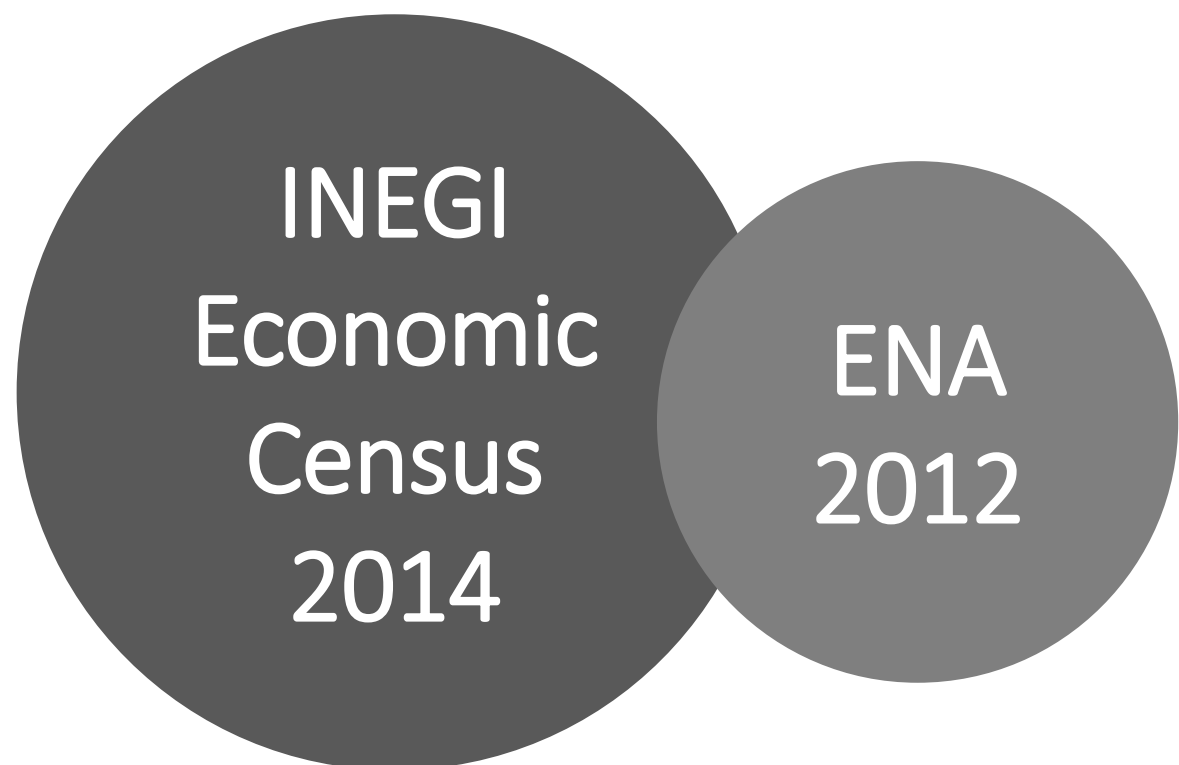
Use Table																										
	Total Use (Purchase prices)	Intermediate demand								Final Demand																
		Total Supply basic prices	Rest of the economy	Total Exporter Unites	DO	DOA	FO	FOA	Good and Services				Household final consumption	Government Consumption	Gross fixed capital formation	Changes in Inventories	Exports	Statistical discrepancy								
Products								DO	DOA	FO	FOA	Sector 1														
Good and services	Sector 1																									
	Sector 2																									
	Sector 3																									
GVA Total Gross Production																										

DO: Domestic Owned
DOA: Domestic Owned
Affiliate
FO: Foreign Owned
FOA: Foreign Owned
Affiliate

C. SIZE OF THE ECONOMIC UNIT

APPLIES TO THE TOTAL OF THE ECONOMY

Sources of information:



The distribution coefficients were calculated based on the Value of Production by class of activity and size of the economic unit

Employed personnel is the main calculation variable

Criteria:

Employed personnel
1 a 50



Employed personnel
> 50 a 250



Employed personnel
>250



As a result of the analysis of the information, it was determined that characterization by size of the EU with the same procedure was not feasible for the **AGRICULTURAL AND GOVERNMENT** sectors, therefore, the treatment applied was:

AGRICULTURAL SECTOR

Criteria:

Crops	
Size	Hectares
Small	0 to 5
Medium	More than 5 to 20
Large	More than 20 to more than 50

Livestock		
Size	Bovine (Heads)	Porcine (Heads)
Small	1 to 10	1 to 15
Medium	11 to 120	16 to 150
Large	More than 120	More than 150

In the **PUBLIC SECTOR**, the variable used for the construction of the coefficients was only the reported **Employed Personnel** of those economic units that were registered and classified as "Public".



Supply Table																														
		Total Supply (Purchase Prices)	Trade and transport margins			Taxes on the net products			Supply at basic prices				Industry									Imports CIF	Adjustment CIF- FOB	Total Imports CIF (Total FOB)						
			Total	S	M	L	Total	S	M	L	Total Supply basic prices	Total	S	M	L	Good and Services			Sector 1						Sector 2			Sector 3		
Products															S	M	L	S	M	L	S	M	L	S	M	L				
Good and Services	Sector 1																													
	Sector 2																													
	Sector 3																													

Use Table																															
		Total Use (Purchase prices)	Intermediate Demand									Final Demand																			
			Total	S	M	L	Good and Services			Household final				Government Consumption			Gross fixed capital		Changes in Inventories		Exports	Statistical discrepancy									
Products						Sector 1			Sector 2			Sector 3			Household final				Government Consumption			Gross fixed capital		Changes in Inventories		Exports	Statistical discrepancy				
						S	M	L	P	M	G	P	M	G	Household final				Government Consumption			Gross fixed capital		Changes in Inventories		Exports	Statistical discrepancy				
Good and Services	Sector 1																														
	Sector 2																														
	Sector 3																														
GVA Total Gross Production																															

S: Small
M: Medium
L: Large

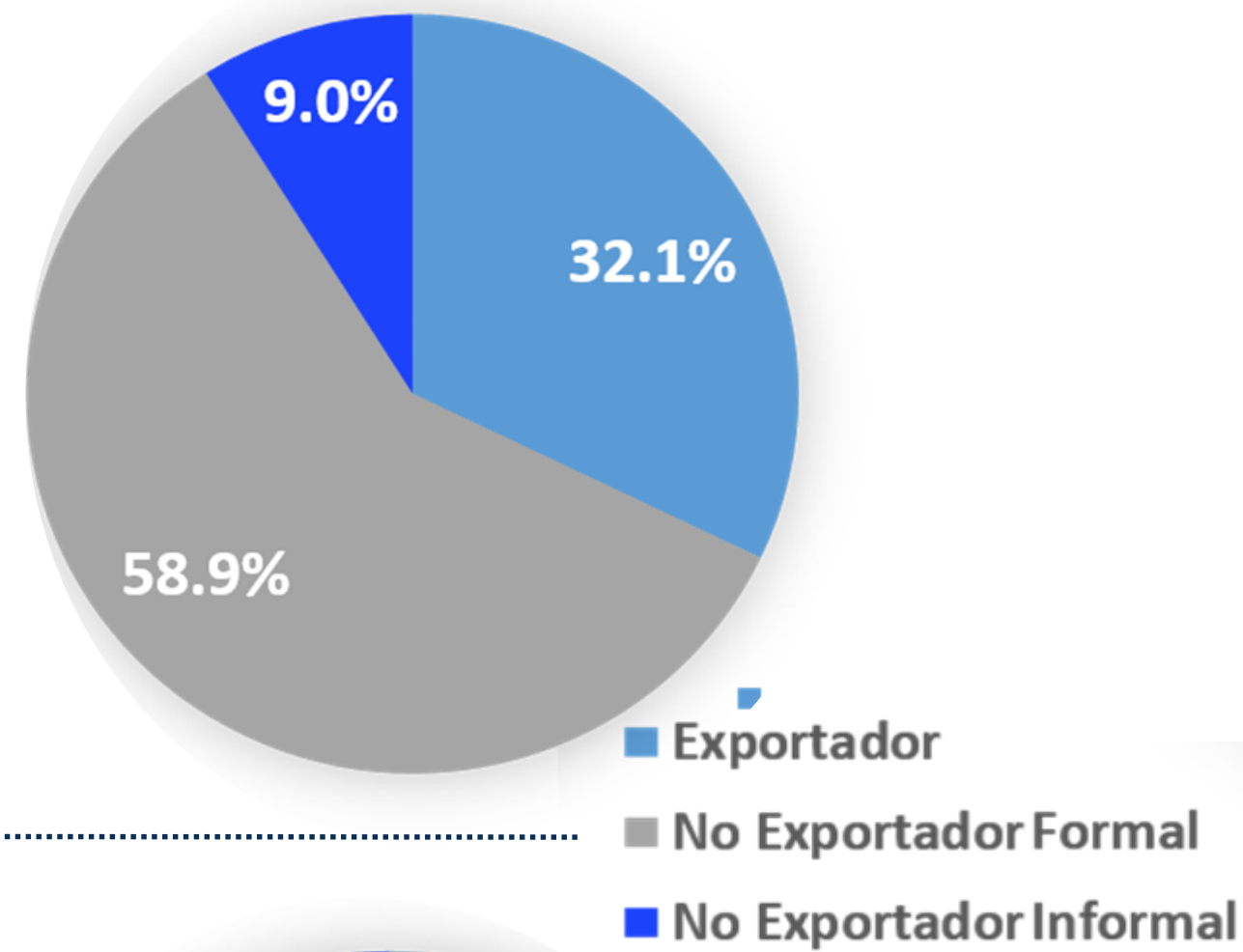
| RESULTS

Exporter Focus

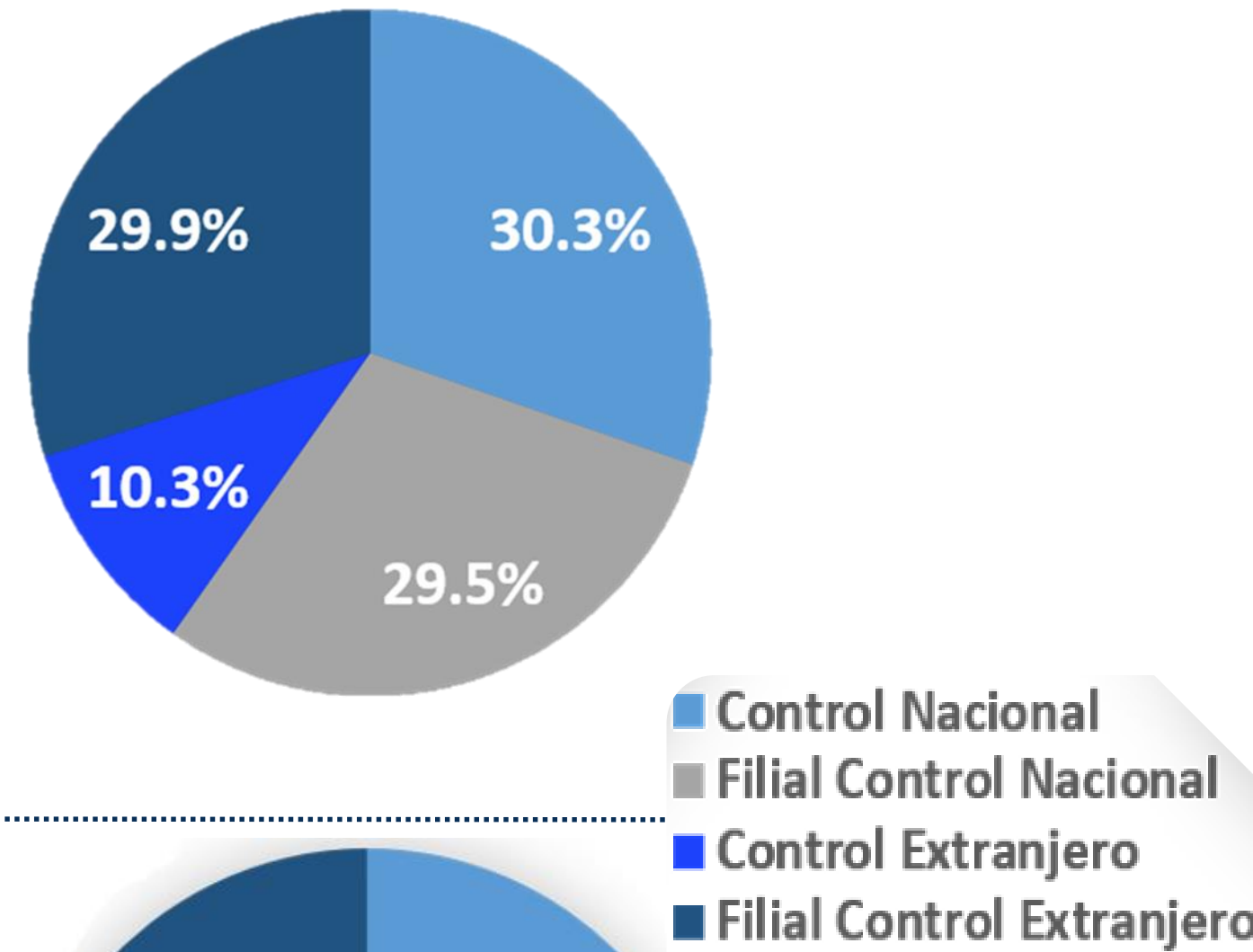
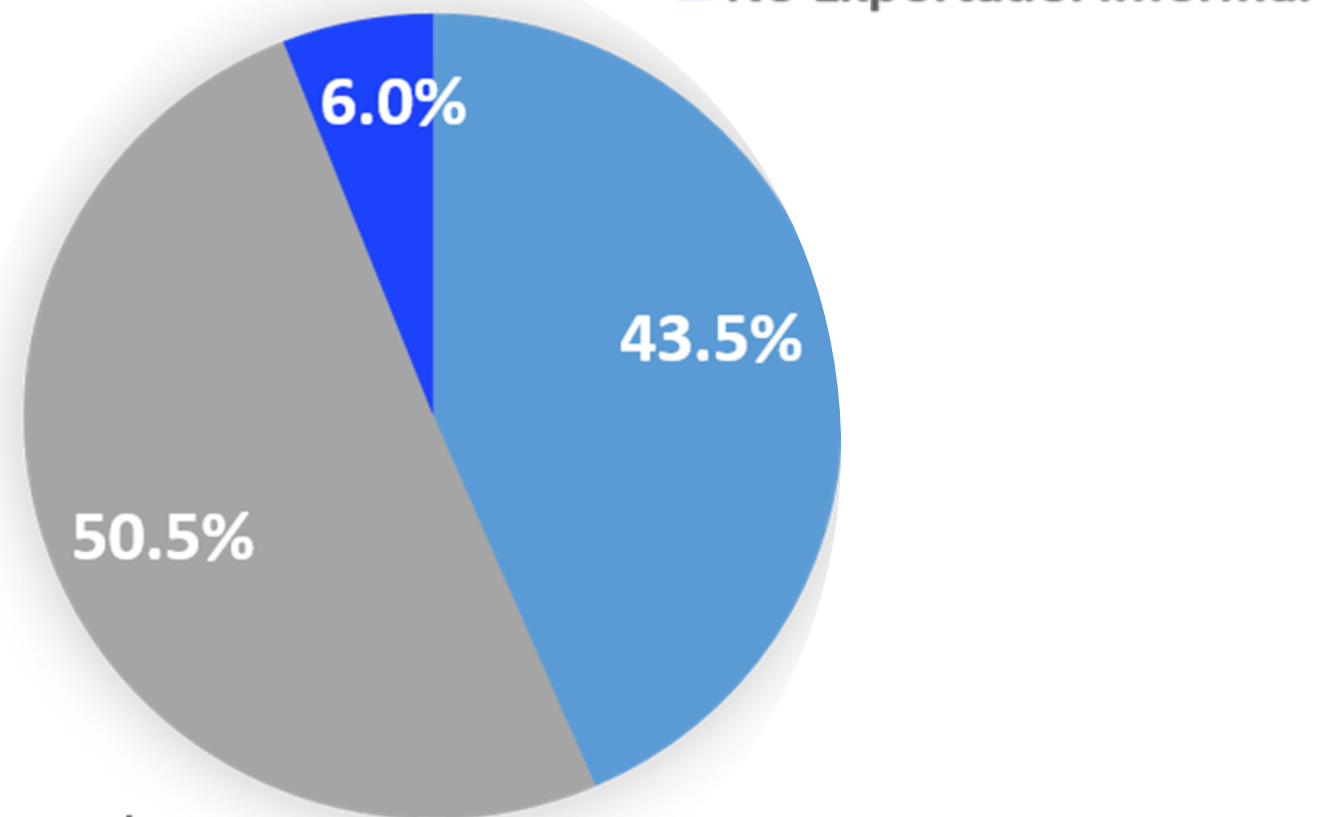
Ownership Focus

Size of the EU

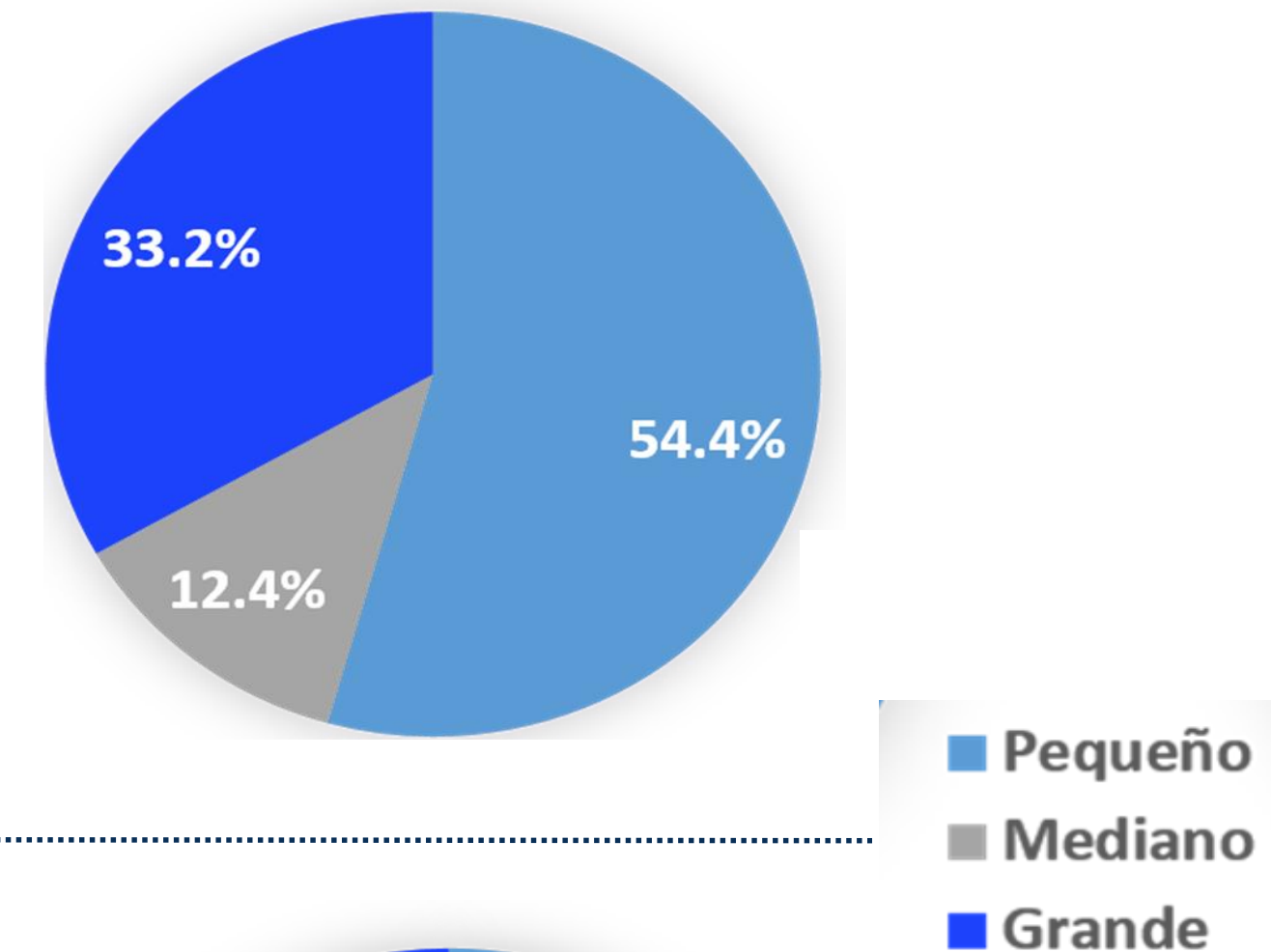
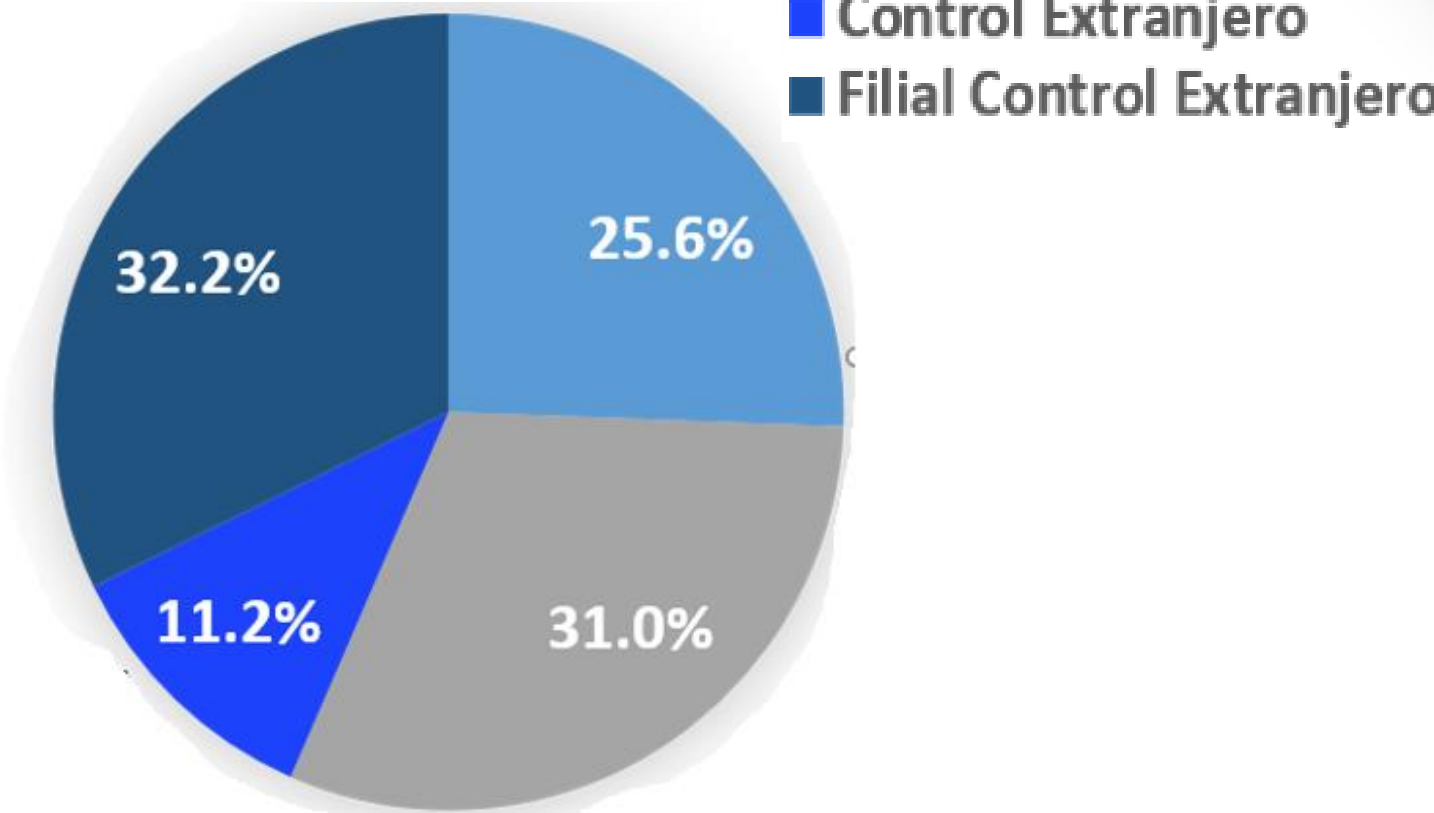
Total production



Total intermediate demand



*Considers the Economic Units classified as exporters



<https://www.inegi.org.mx/temas/coue/>



Next steps



Exporter profile. Extended
Intermediate Use by Domestic and
Imported Origin

The objective of this disaggregation is to show the **origin** of the goods and services used to **carry out the production** of the establishments that registered exports and were characterized as part of the **Exporter Focus (EF)**.

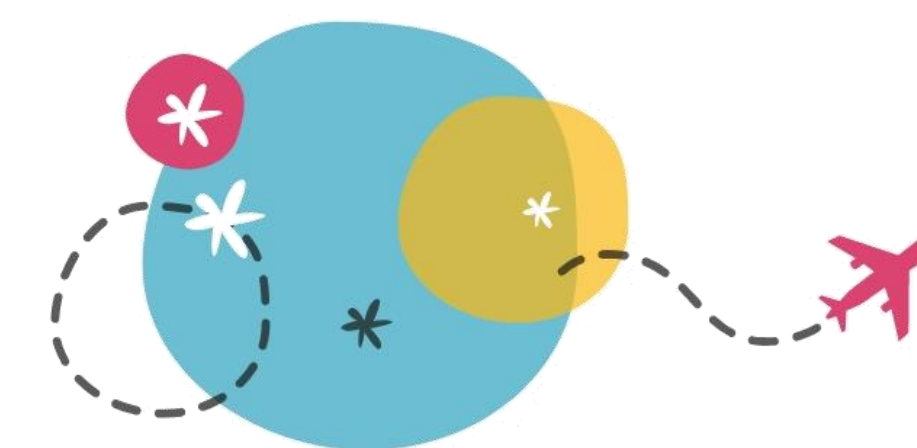
The origin of intermediate goods and services will be presented in two aggregates :

Domestic



Intermediate inputs of national origin

Imported



Intermediate inputs from abroad.

Exporter profile

		Total use at buyer prices		Intermediate demand																	
				Goods and services																	
Products		Total	E		NE		Sector 1			Sector 2			Sector 3								
			D	I	D	I	Total	E	I	NE	Total	E	I	NE	Total	E	I	NE			
Goods and services	Sector 1																				
	Sector 2																				
	Sector 3																				

E: Exporter

D: Domestic

I: Imported

NE: Non Exporter

D: Domestic

I: Imported

Dimensions

100 columns x
20 rows
2,000 cells



44%
Of total ID

Matrix of Total Intermediate Consumption, Domestic and Imported*

\$12 000 028

43.5%

Exporter Profile
\$5 223 928

56.5%

Non Exporter Profile
\$6 776 100

Domestic Intermediate Consumption*

\$2 279 765

Imported Intermediate Consumption*

\$2 944 163

Domestic Intermediate Consumption*

\$5 233 202

Imported Intermediate Consumption*

\$1 542 898

19.0%

24.5%

43.6%

12.9%

*Millions of pesos

Opening of the components of the Added Value of the Exporter Profile

The ESUT 2013 publication covered most of the characteristics that make up the Traditional Tables with the exception of the breakdown of the components of the added value of the exporter profile.

Breakdown of the:

- *Components of VA of the UT 2013.*
- *Components of VA of Informal Sector.*
- *Total economy Census production accounts.*

The opening scheme by type of economic activity proposed is as follows :

Use Table. Export Focus	Intermediate Demand					
	E	FNE	INE	E	FNE	INE
	Sector 1			Sector 2		
Concept						
B1g. - GROSS VALUE ADDED AT BASIC PRICES						
D.1 - Total compensation of employees						
D.11 - Wages and salaries that include effective social security contributions						
Wages						
Salaries						
D.121 - Effective Social Security Contributions						
D.122 - Other Social Benefits						
D.29-D.39 - Net Production Subsidy Taxes						
D.29 - Taxes on the activity						
D.39 - Minus: subsidies						
B.2b - Gross Operating Surplus						
P.1 TOTAL PRODUCTION BY ACTIVITY AT BASIC PRICES						

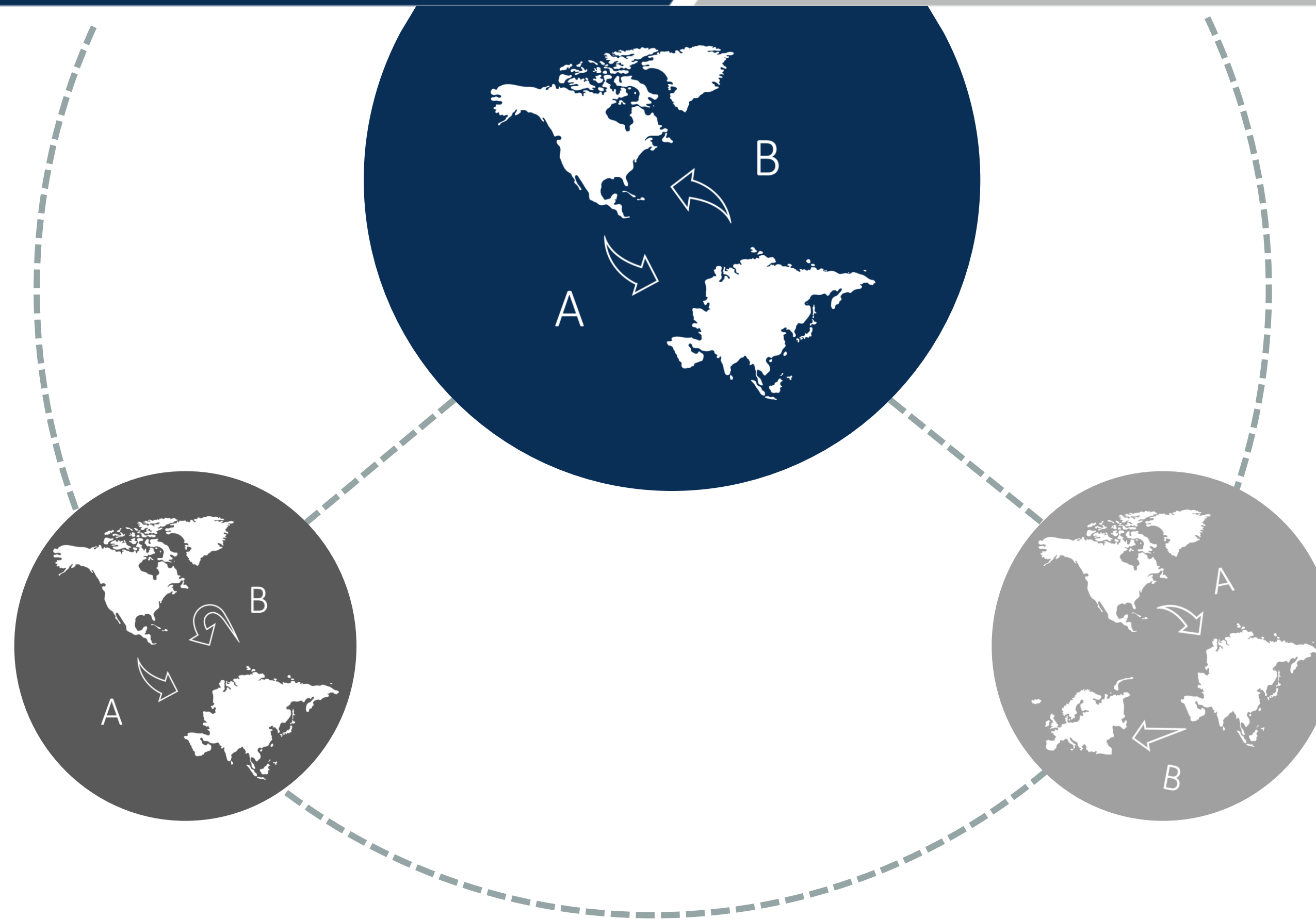
Dimensions

3,177 columns x 12 rows = 38,124 cells

E: Exporter
 FNE: Formal Non Exporter
 INE: Informal Non Exporter

| Production arrangements

Allow to know the **breakdown** of the **economic activities** that are carried out throughout the **global supply chain**.



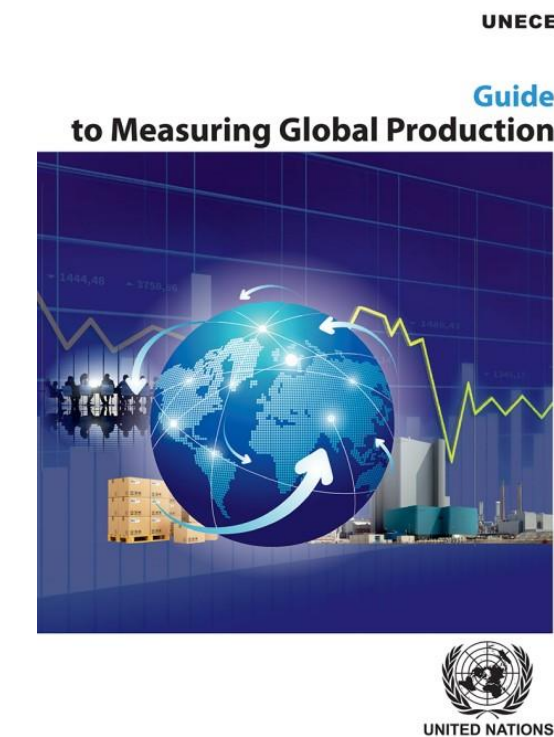
Determine the degree of **coordination** or **control** (and the associated risk) that a **leading company** has over the **production process**.

https://www.unecce.org/fileadmin/DAM/stats/publications/2015/Guide_to_Measuring_Global_Production__2015_.pdf

Goods sent abroad for processing

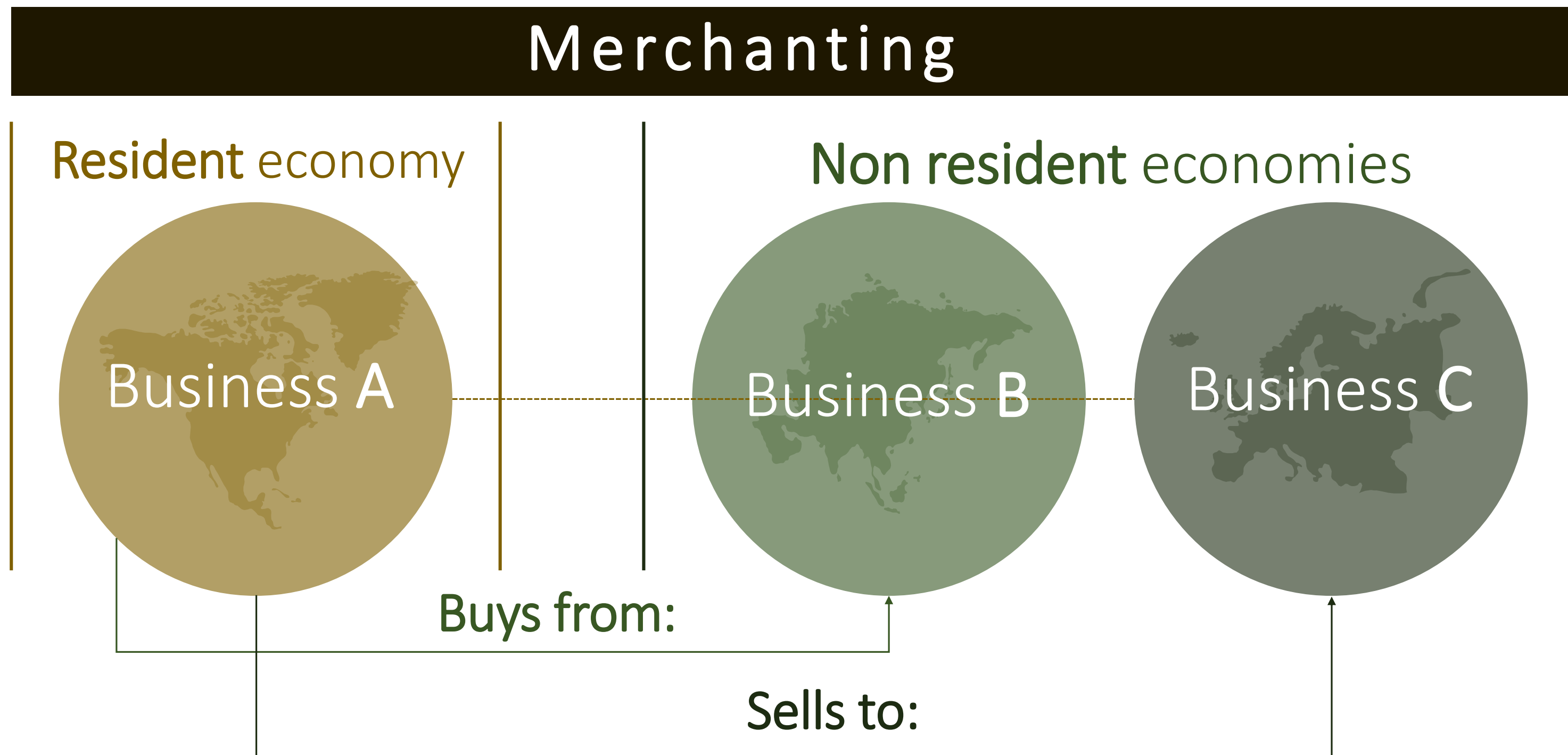


The characteristic of **goods sent abroad for processing** is based on **international transactions** where the raw material is **owned by third parties**, as well as the **final products**.



Merchanting

Refers to the **purchase** of a **good** by a **resident** (of the compiling economy) to a **non-resident** and the **subsequent resale** of the same good to **another non-resident** without said good being present in the executing economy.



Head Office

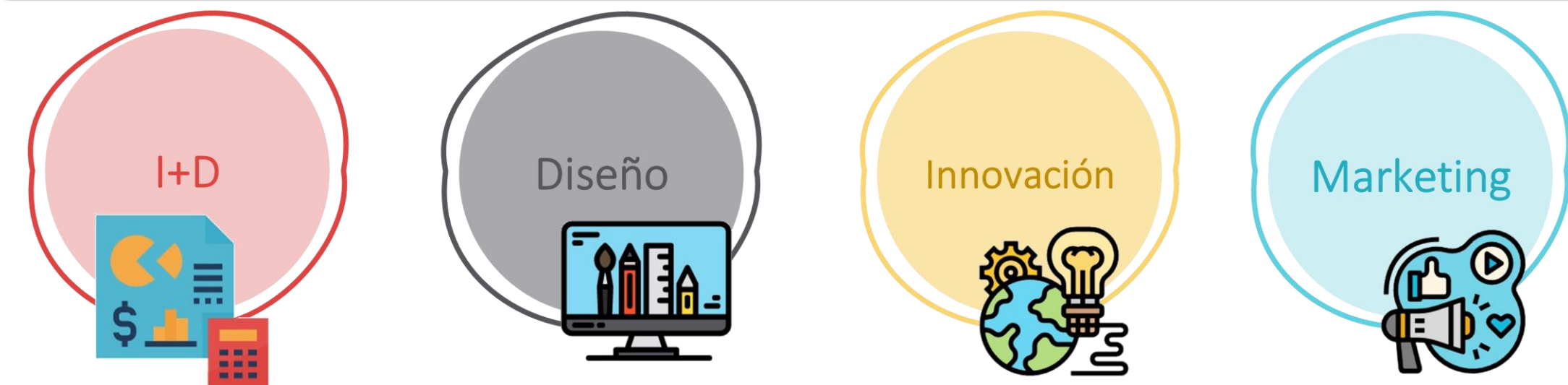
Refers to the characterization of the **establishments** that carry out the **supervision, operational control and management** of the activities of the **subsidiaries** through **planning, administration, decision-making and organization** oriented towards **managerial, administrative and technological development** activities.



Factoryless

Happens when a resident **establishment** owns the **intellectual property** used in the **production** process, but **does not** have the **physical assets** or the **labor force** to transform intermediate inputs.

The entire **production process** is **outsourced** to **another establishment** (the business could be in the same country or abroad).



| Supply modes

General Agreement on Trade in Services

Are the way in which services are consumed in International Trade and are defined considering that the supplier and its consumer are in the same country or in different countries when the service is being presented, always taking into account their nationality or origin.



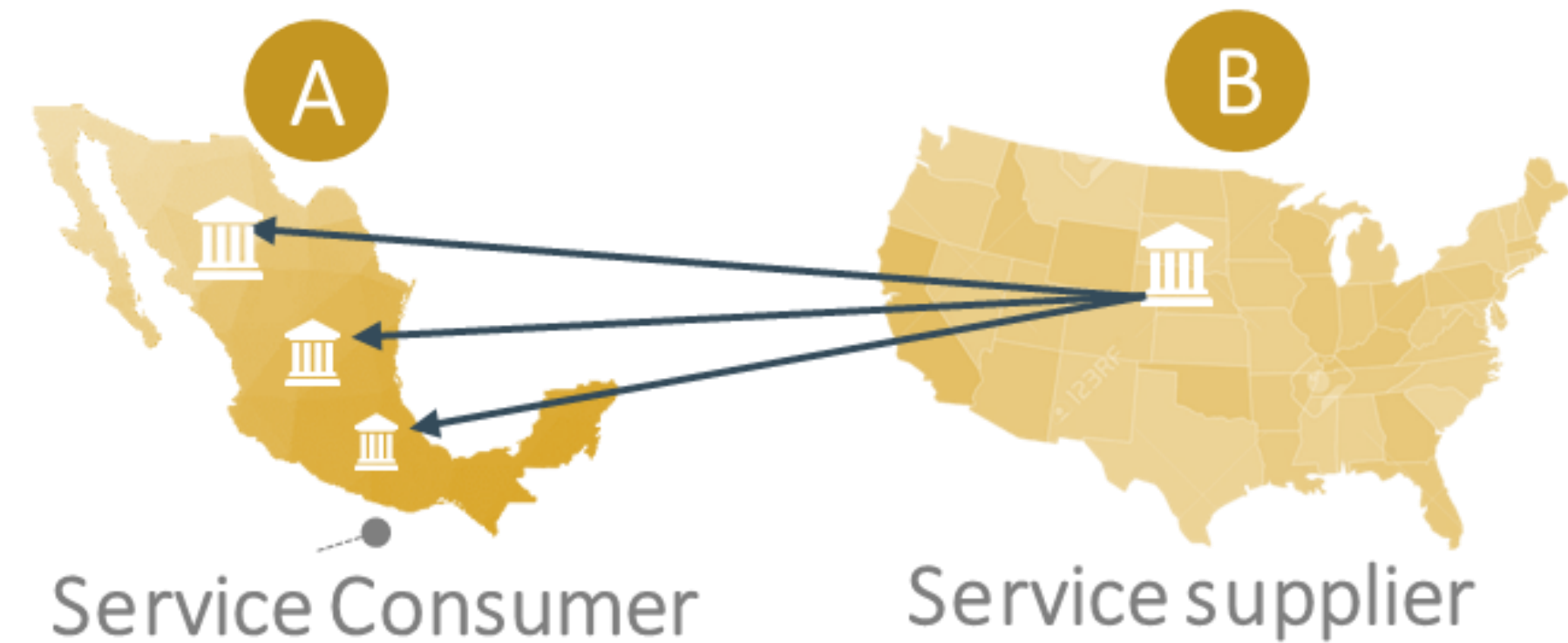
ORGANIZACIÓN
MUNDIAL
DEL COMERCIO

In this context, the Institute is designing a quarterly and annual survey on **International Trade in Services** that meets the related needs for internal work as well as for the Balance of Payments.

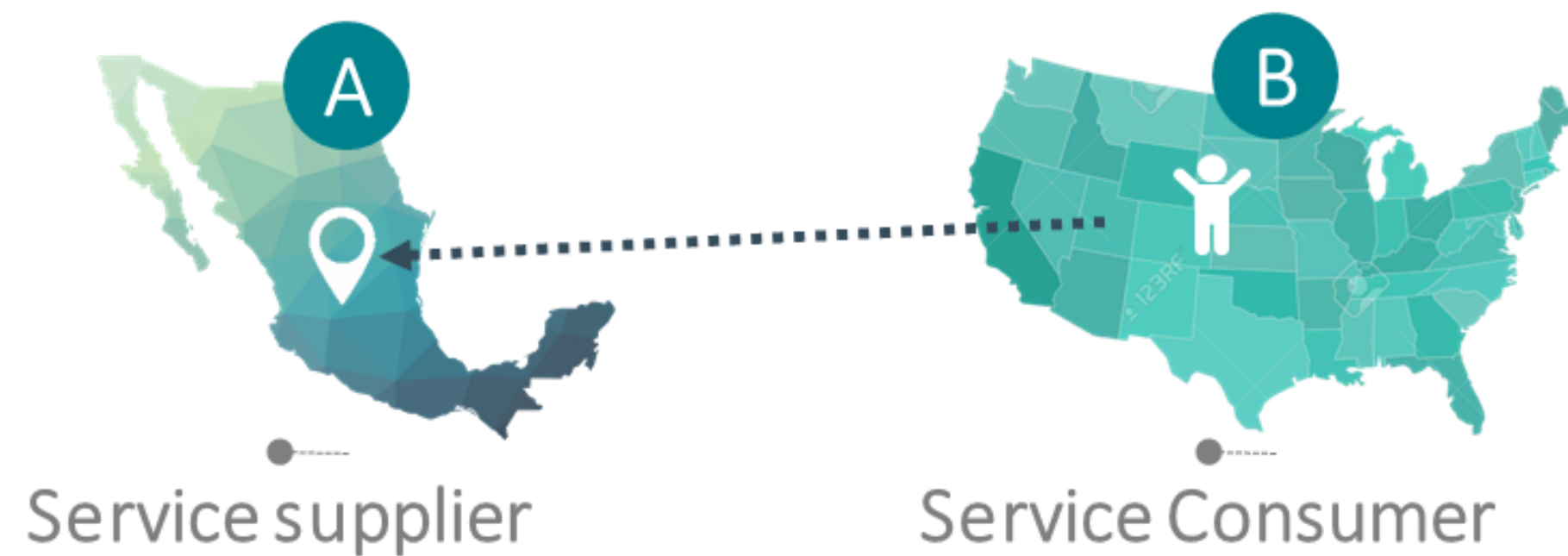
Consumption abroad



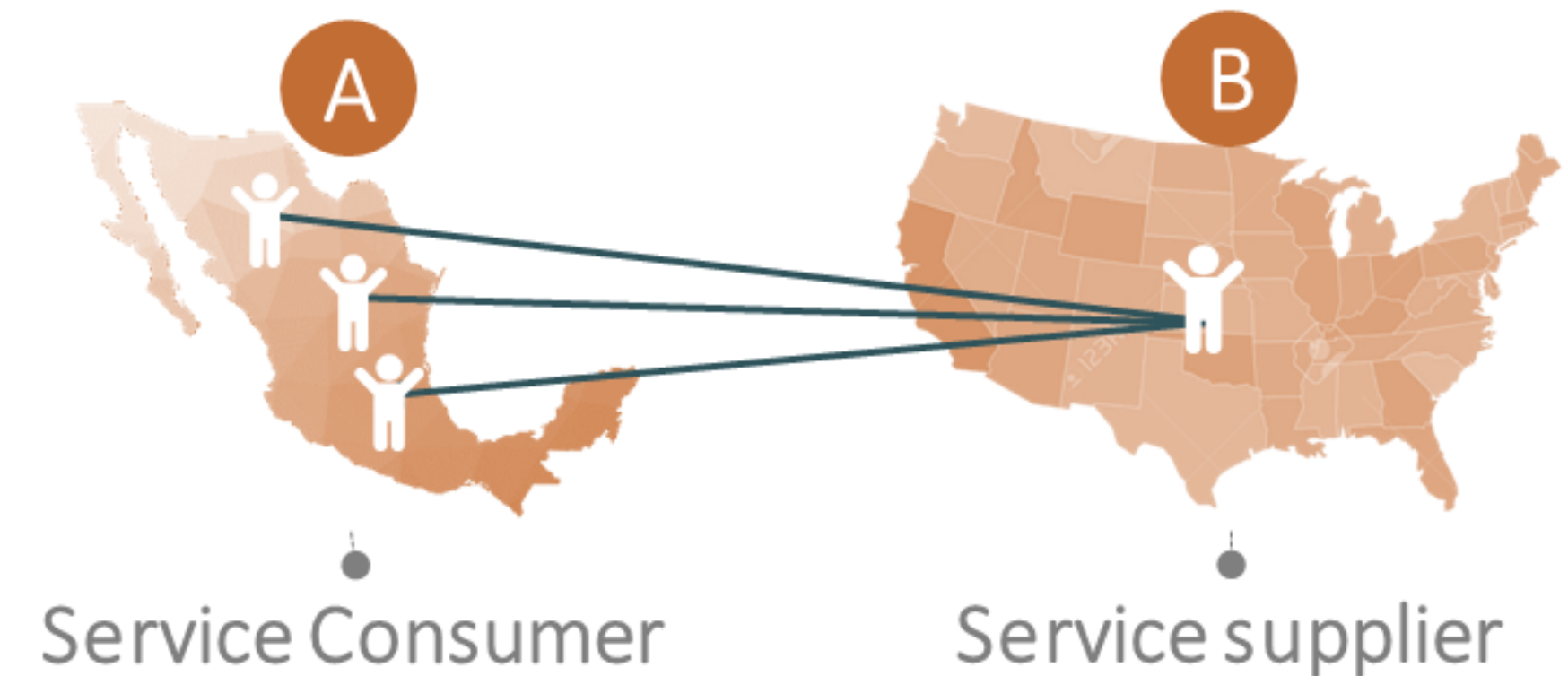
Commercial presence



Cross-border supply



Individuals



Conociendo México

800 111 46 34

www.inegi.org.mx

atencion.usuarios@inegi.org.mx



INEGI Informa