

# HUMAN AND NATURAL EVENTS ARE GEOSPATIAL AND STATISTICAL MULTIDOMAIN ISSUES THAT RAISE AT LEAST THREE QUESTIONS:

- **WHAT IS HAPPENING OR HAS HAPPENED?**
- **WHERE ?**
- **WHY ?**
- To answer **WHY**, knowing **WHERE** is also a key information piece for analysis and policy-making.



UNITED NATIONS

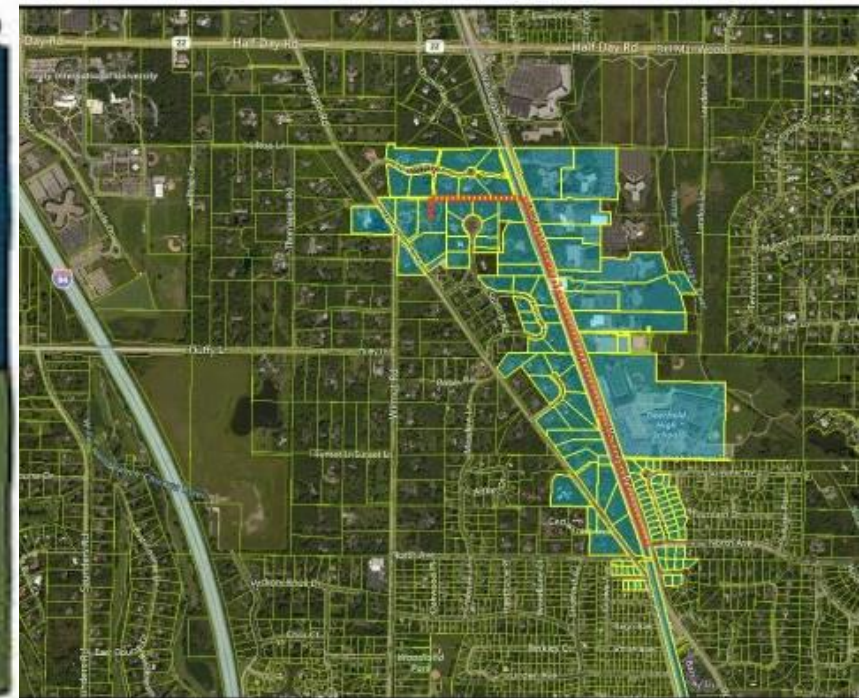
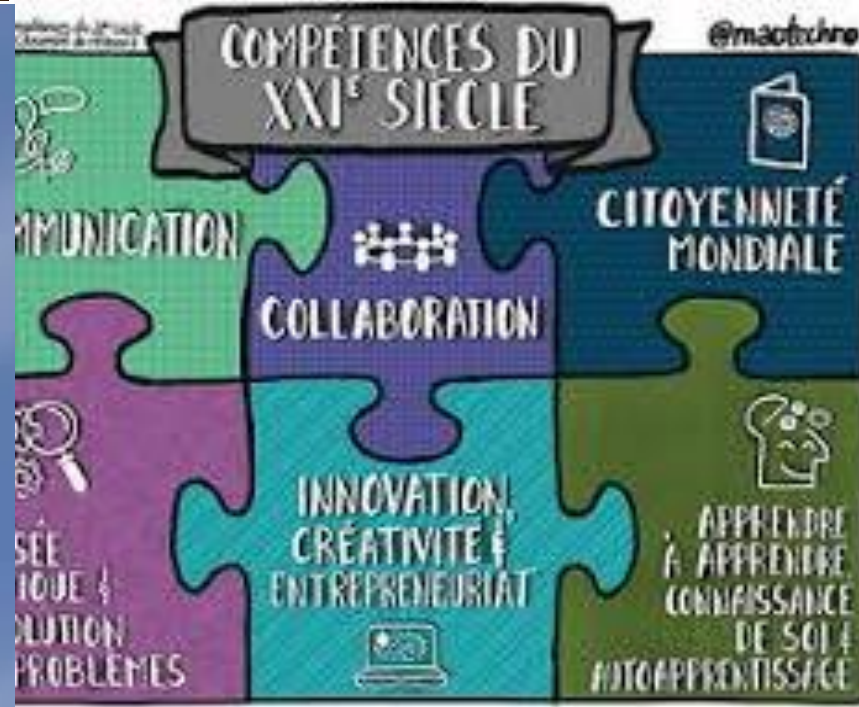


PASCUAL GERSTENFELD  
Statistics Division Director  
UN-ECLAC



*20e siècle*

**Time of Changes vs.  
Change of Time**





# “GEOSPATIAL INFORMATION: MAKING A DIFFERENCE FOR MILLIONS OF PEOPLE”

IMAGINE AN INFORMATION SYSTEM  
WITHOUT INTEGRATING GEOSPATIAL AND STATISTICAL DATA.....

IT IS LIKE IMAGINING A WORLD OF CLOTHES WITHOUT CONSIDERING THE SEWING THREAD



## THE METAPHOR TOOL-KIT





## INTEGRATION OF GEOSPATIAL AND STATISTICAL INFORMATION IS A KEY AND INESCAPABLE CHALLENGE TO BE FACED!

- For most LAC countries, **the geospatial and statistical institutional and substantive ways have taken parallel and sinuous roads of development.**
- **Derived from historical institutional and subject matters construction, only a couple of pioneers countries in the LAC region begun this integration** since some decades ago.
- “Time for bridges for integration of GEO & STATS” has come from **the hand of simultaneous process!**

“Nowadays, bridges for the integration of GEO & STATS are a must”

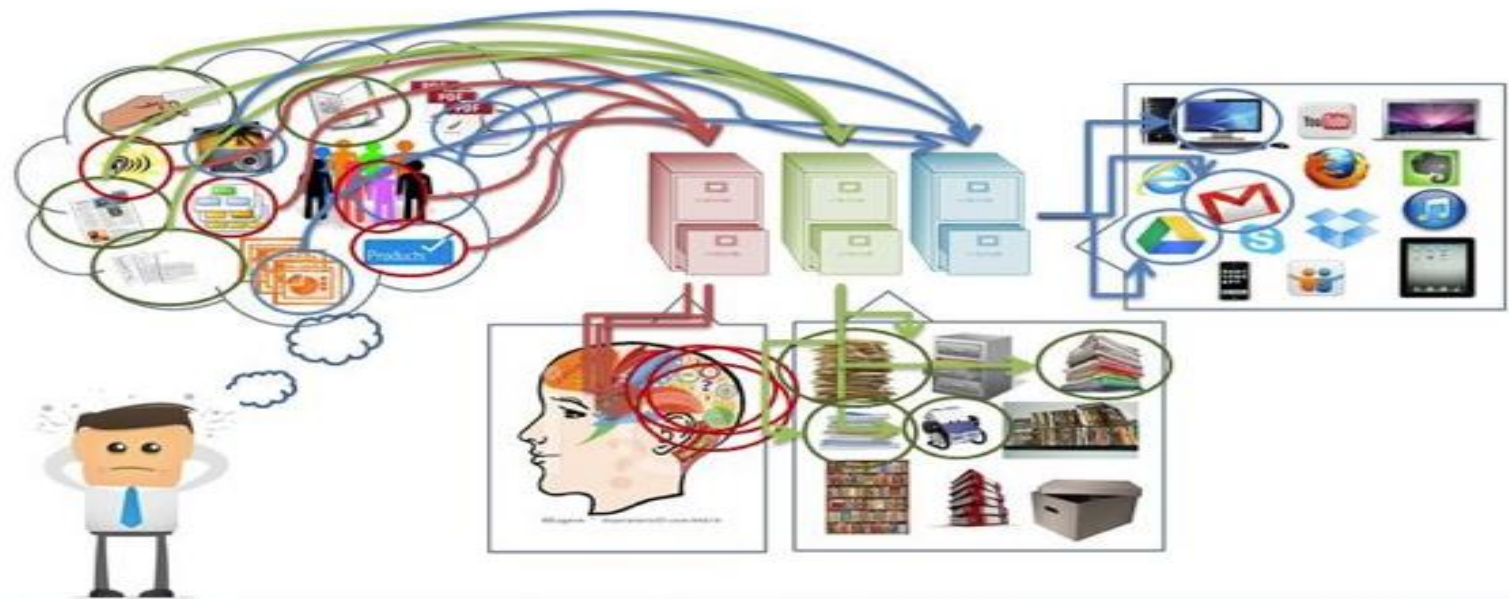
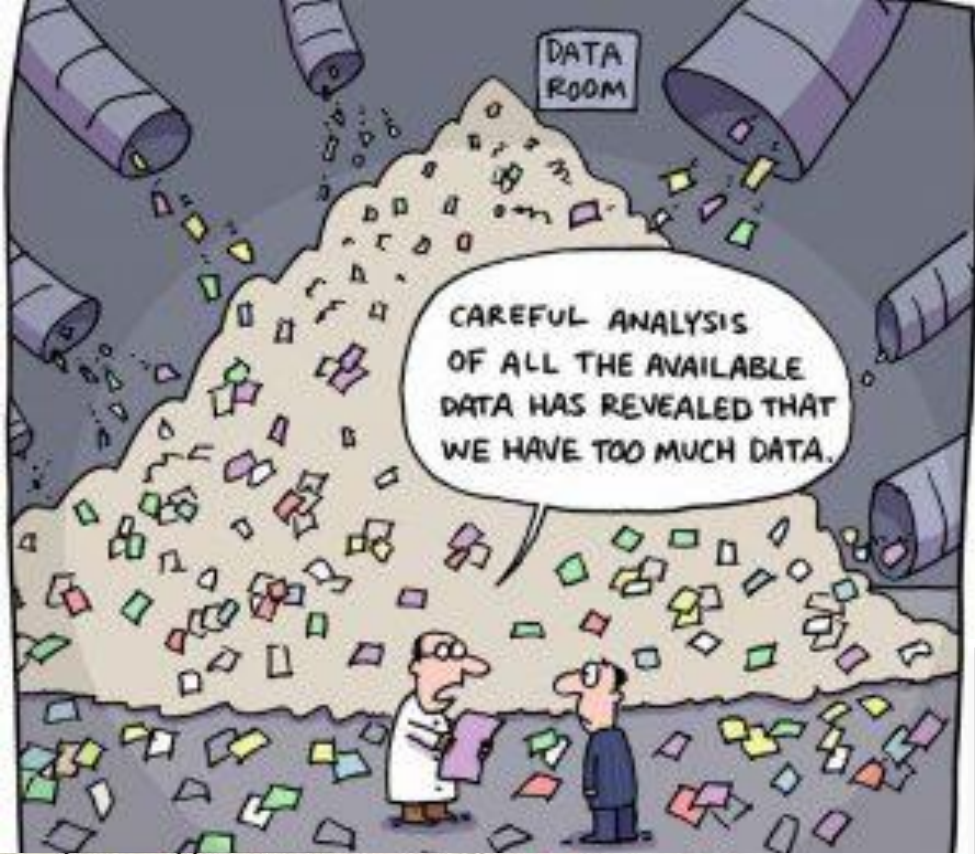


Time for  the integration of GEO & STATS has come

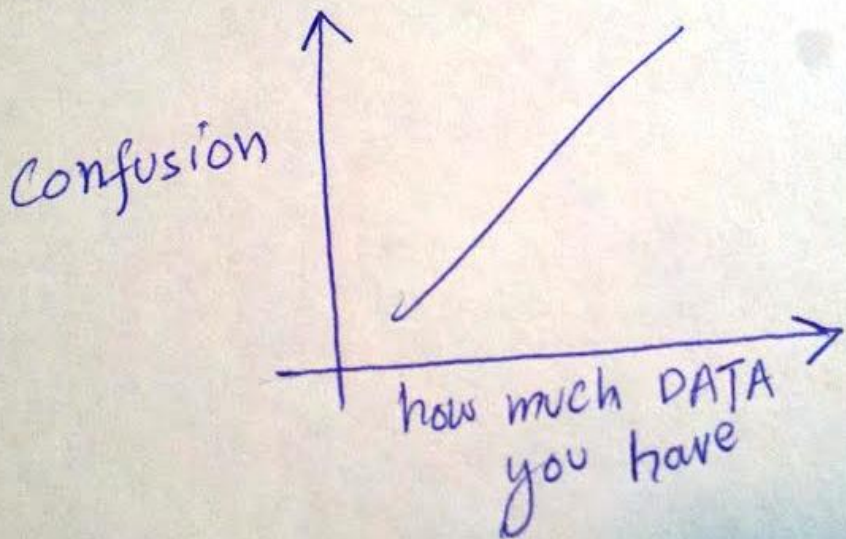
from **the hand of simultaneous process:**

- the 2030 Agenda for Sustainable development,
- the acceleration in the availability of stronger technological tools and solutions,
- the “globalization and digitalization processes” and their “digital foot-print” for analysis,
- the exponential increase of Big Data on Human and Natural Events and the expansion of Data Science and Analytics.
- **THE SCA AND UN-ECLAC ROADMAP for LAC REGION**



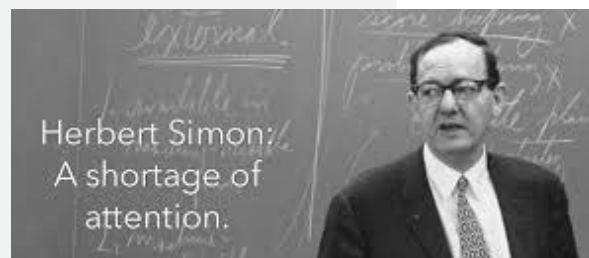


**WARNING**  
Your Warning Message Here



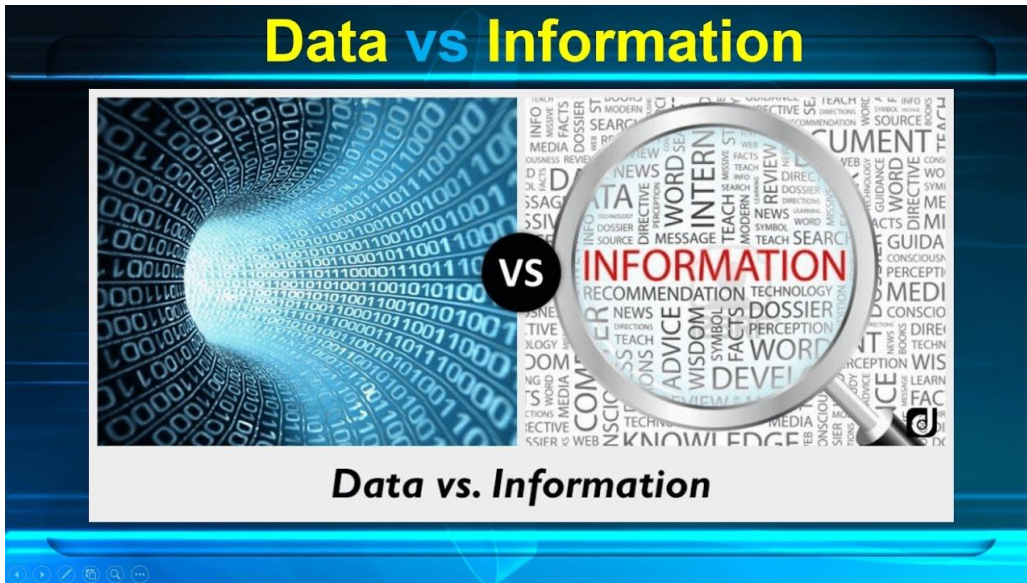
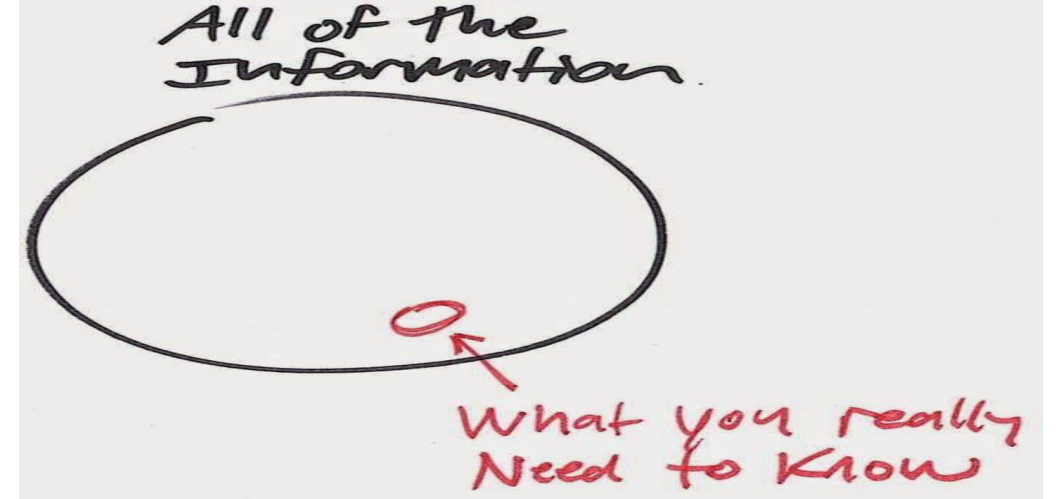
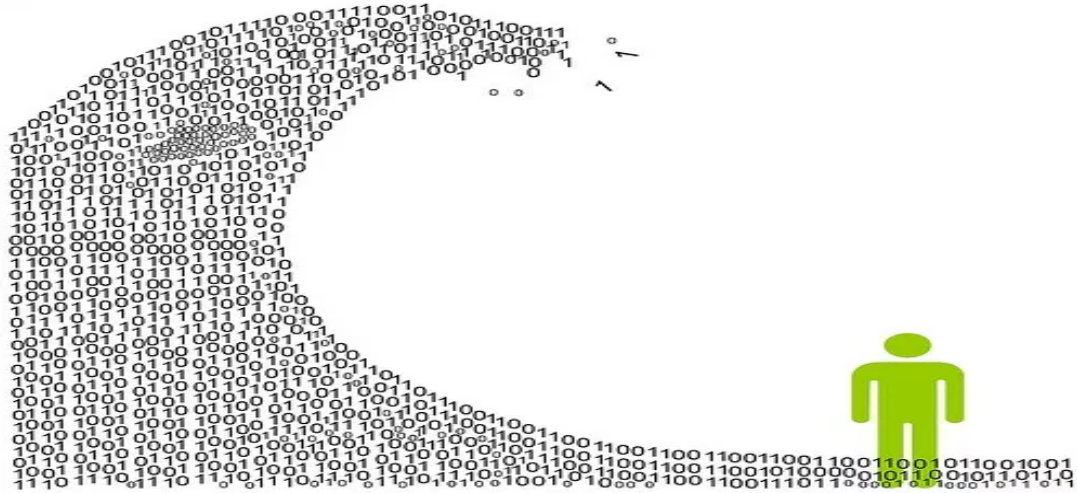
“WHAT INFORMATION CONSUMES IS RATHER OBVIOUS: IT CONSUMES THE ATTENTION OF ITS RECIPIENTS. HENCE A WEALTH OF INFORMATION CREATES A POVERTY OF ATTENTION, AND A NEED TO ALLOCATE THAT ATTENTION EFFICIENTLY AMONG THE OVERABUNDANCE OF INFORMATION SOURCES THAT MIGHT CONSUME IT.”

— HERBERT SIMON





# THE NEW BIG CHALLENGE: Being selective efficient



**LOOKING TO THE FUTURE OF STATS & GEOSPATIAL INFORMATION  
WITH A COMPREHENSIVE APPROACH FOR :  
“MAKING A DIFFERENCE FOR MILLIONS OF PEOPLE”**



**IN SEARCH  
OF A NEW  
HUMAN  
edge**



