

Colombian Vulnerability Index

COVID-19: Strategies for a Geospatial Response in the Americas

Mayo 15 de 2020



El futuro
es de todos

Gobierno
de Colombia

Integration of Statistical and Geospatial Information for better decisions

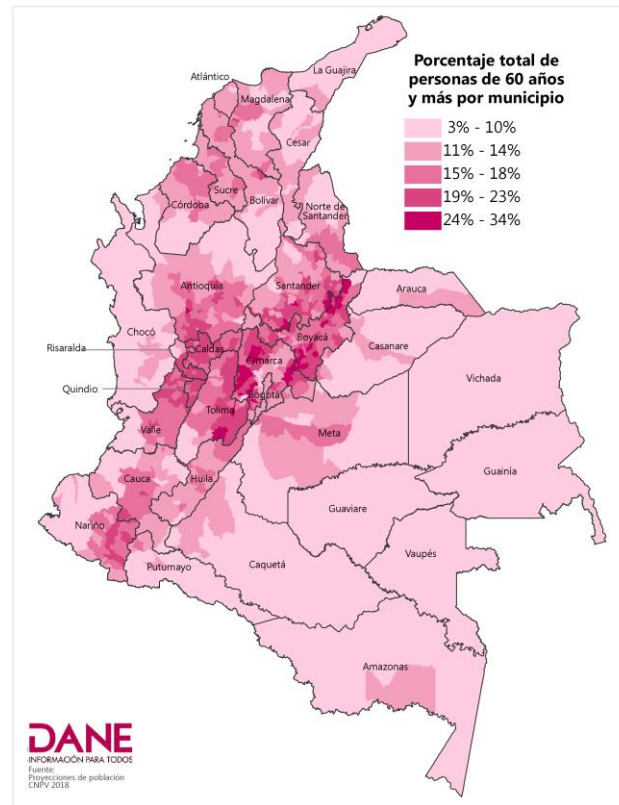
Objective: Since 17 March, the National Planning Department (DNP), the Institute of Health Technology Assessment (IETS) and the National Administrative Department of Statistics (DANE) have been collaborating with the Ministry of Health and Social Protection and the National Institute of Health to provide statistical and build tools that will make it easier for the government to make decisions with greater certainty for the attention of the emergency caused by the COVID-19.

- ▶ Timely information
- ▶ Easy to use
- ▶ High level of geographical disaggregation
- ▶ Inter-institutional partnerships

Information is power, but only if people are able to access, understand and apply it

Calculation of the vulnerability index per block using demographic variables and comorbidities

The project sought to identify with the highest possible of disaggregation level (block) the population in the municipalities of the country that due to their demographic characteristics and their conditions of health may have more complications if they get the COVID-19



Calculation of the vulnerability index per block using demographic variables and comorbidities

Identification per block of individuals with comorbidities and demographic characteristics

Assign a level of vulnerability to each cluster

Apply the technique of unsupervised learning kmeans by urban areas

Document:

https://www.dane.gov.co/files/comunicados/Nota_metodologica_indice_de_vulnerabilidad.pdf

Geovisor – support covid management

<https://geoportal.dane.gov.co/visor-vulnerabilidad/>

DANE

INFORMACIÓN PARA TODOS

i Comunicado de prensa

Tutorial

Grupos por niveles de vulnerabilidad de fuente censal - información a nivel manzana

Departamento

Seleccione...

Capas disponibles

Índice de pobreza multidimensional +

Grupos por nivel de vulnerabilidad +

Activar

Transparencia

Altura

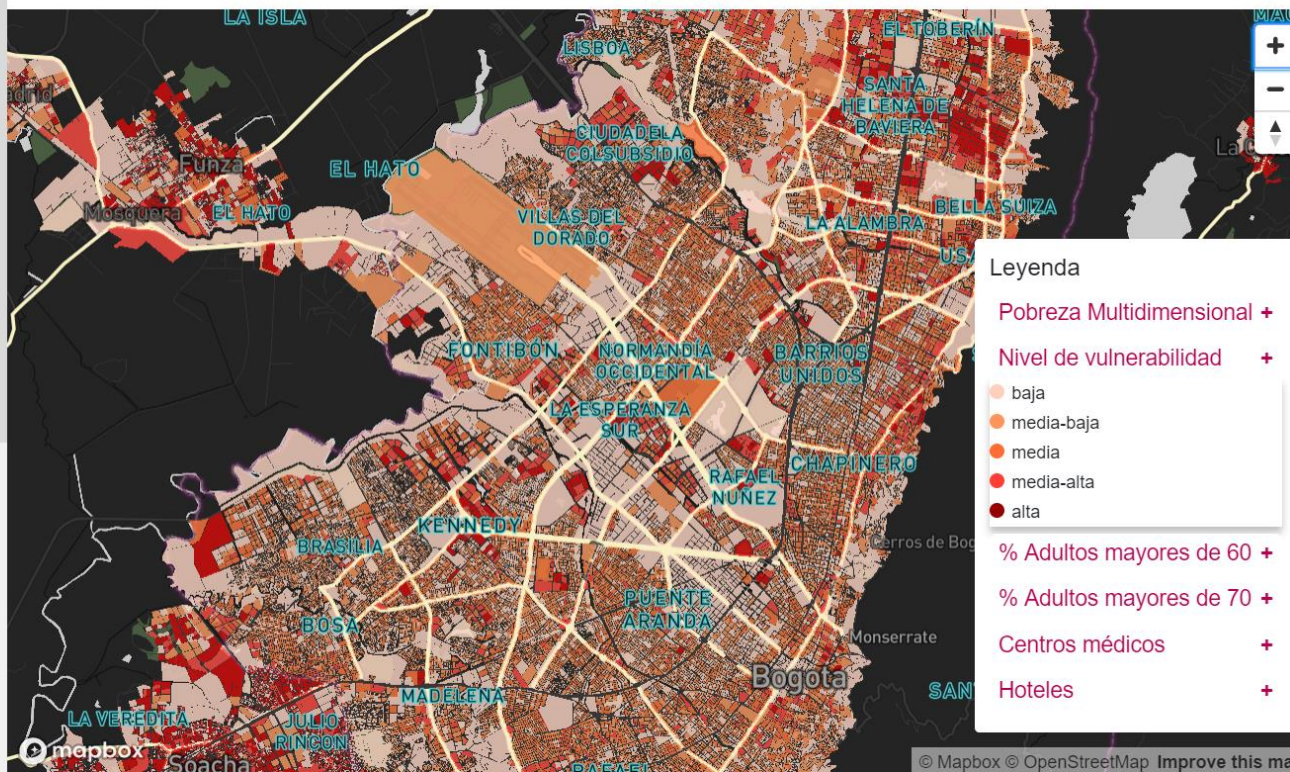
% Adultos mayores de 60 años +

% Adultos mayores de 70 años +

Centros médicos +

Hoteles +

Grupos por niveles de vulnerabilidad



Geovisor – support covid management

<https://geoportal.dane.gov.co/visor-vulnerabilidad/>



INFORMACIÓN PARA TODOS

Comunicado de prensa

Tutorial

Grupos por niveles de vulnerabilidad de fuente censal - información a nivel manzana

Departamento

BOLÍVAR

Municipio

CARTAGENA DE INDIAS

Capas disponibles

Indice de pobreza multidimensional +

Grupos por nivel de vulnerabilidad -

% Adultos mayores de 60 años -

Activar

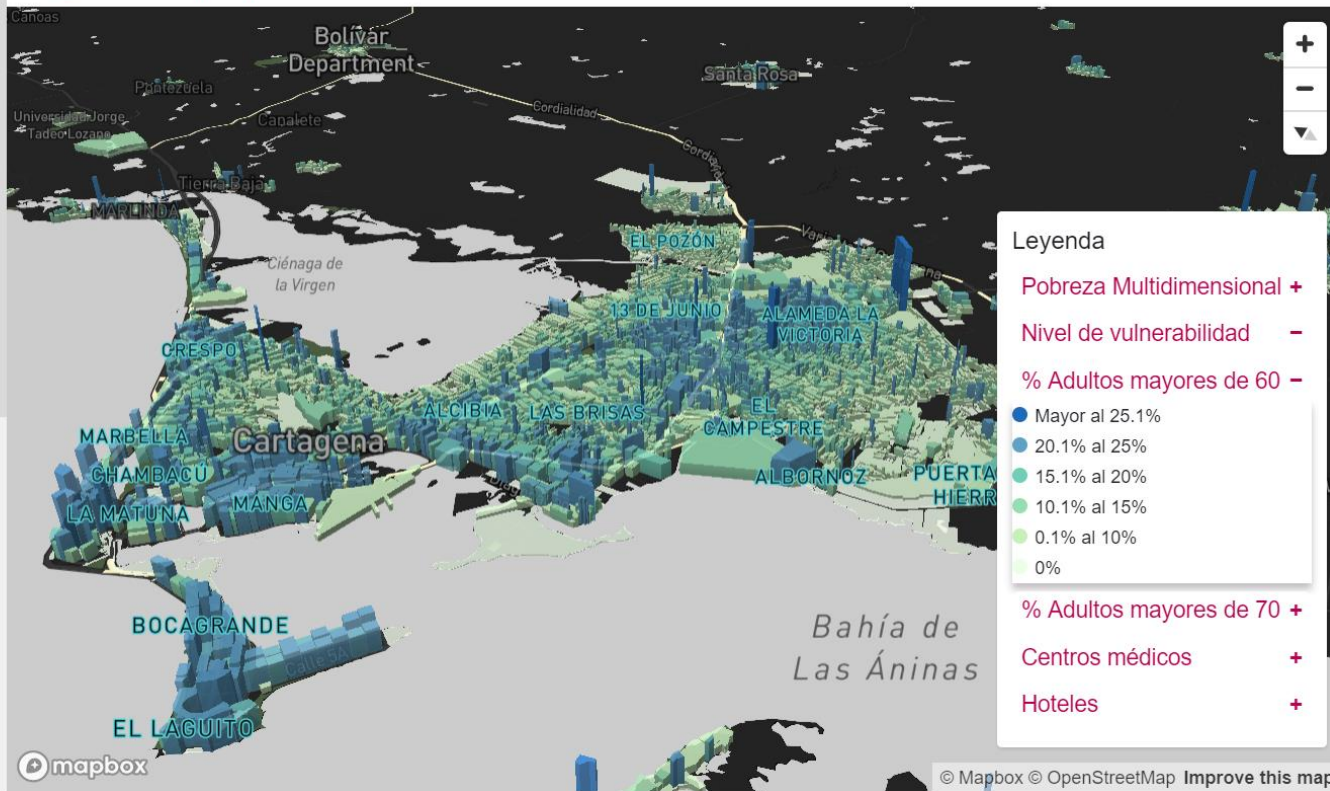
Transparencia

Altura

% Adultos mayores de 70 años +



Grupos por niveles de vulnerabilidad

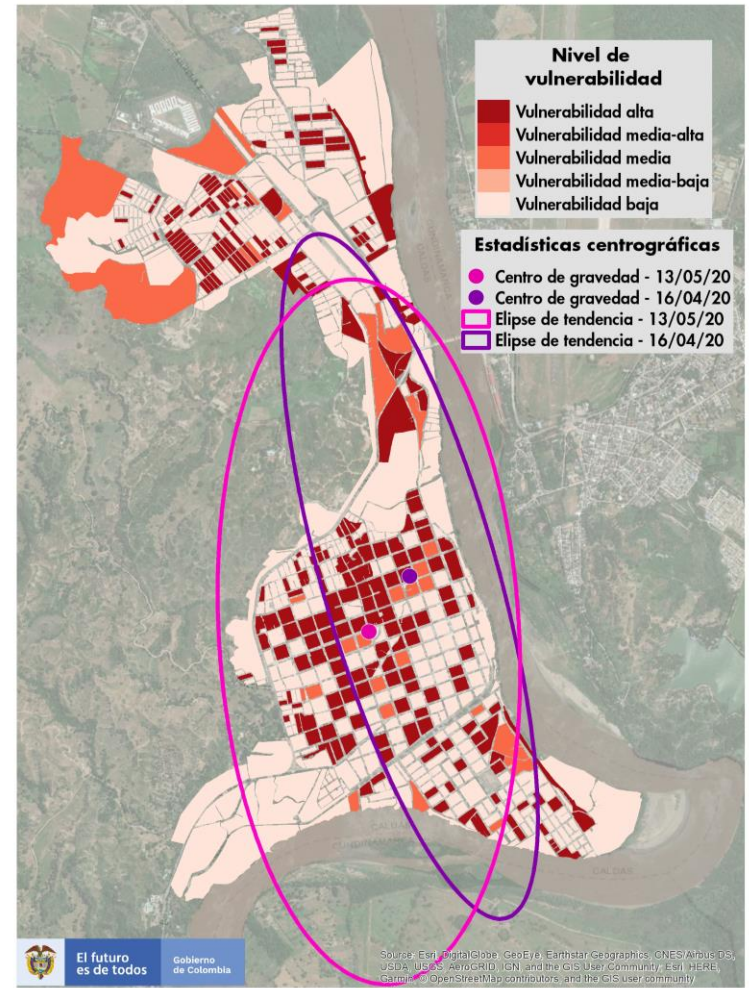


Leyenda

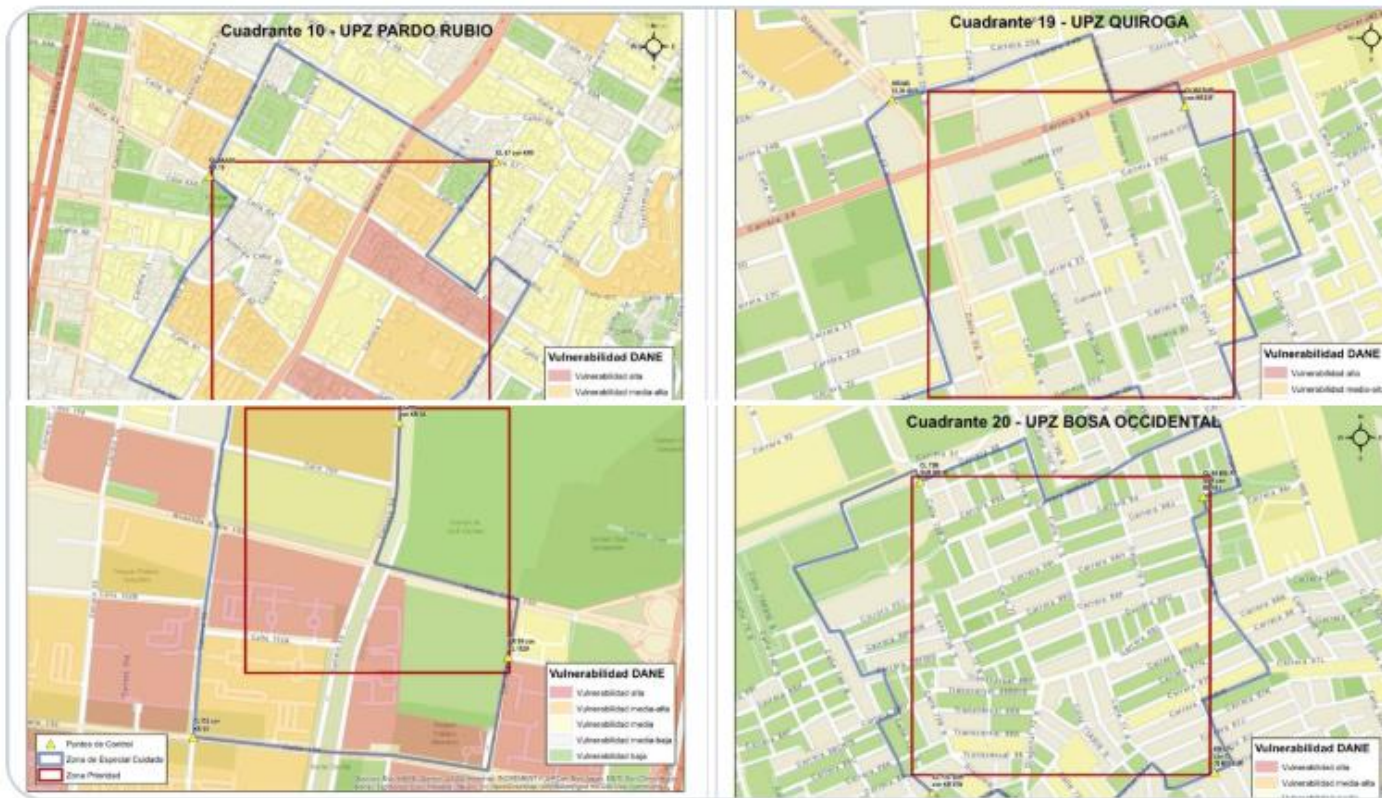
- Pobreza Multidimensional +
- Nivel de vulnerabilidad -
- % Adultos mayores de 60 -
- Mayor al 25.1%
- 20.1% al 25%
- 15.1% al 20%
- 10.1% al 15%
- 0.1% al 10%
- 0%
- % Adultos mayores de 70 +
- Centros médicos +
- Hoteles +

Applications

- Georeferencing COVID cases and identification of the relation with the vulnerability index
- Analysis of spatial and temporal evolution of cases
- Intervention strategies in the territory



Applications: Areas for special attention



Gracias

Departamento Administrativo Nacional de Estadística

Dirección de Geoestadística

visita: <https://geoportal.dane.gov.co/>
dig@dane.gov.co



**El futuro
es de todos**

**Gobierno
de Colombia**



@DANEColombia



@DANE_Colombia



/DANEColombia



/DANEColombia

www.dane.gov.co