

# Seventh Meeting of the Caribbean Development Roundtable

## “Geospatial Information, the Currency of Modern Governments”

Cecille Blake

United Nations, DESA/UNSD, UN-GGIM Secretariat  
Paramaribo, Surinam , 12 October 2022



UN-GGIM

United Nations Committee of Experts on  
Global Geospatial Information Management

*Positioning geospatial information to address global challenges*

[ggim.un.org](http://ggim.un.org)

# Nations Face Serious Challenges



UN-GGIM

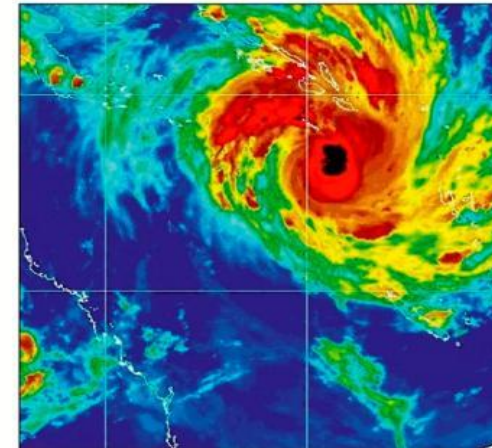
United Nations Initiative on  
Global Geospatial Information Management

*Positioning geospatial information to address global challenges*

[ggim.un.org](http://ggim.un.org)



# Can you measure and monitor sustainable development...



**...without geography, place, and location**



UN-GGIM

United Nations Secretariat  
Global Geospatial Information Management

*Positioning geospatial information to address global challenges*

[ggim.un.org](http://ggim.un.org)



# “Everything happens somewhere...”

Nancy Tosta, June 2001



Everything that happens... happens somewhere.

GIS helps us to locate, view, relate, record, collect, measure, analyze, model and monitor what happens where, when, why, and how.

We can do this more today than ever before...which is far less than what we will do tomorrow.



UN-GGIM

United Nations Secretariat  
Global Geospatial Information Management

*Positioning geospatial information to address global challenges*

ggim.un.org

# What Is 'geospatial information' and GIS ?



**Geospatial Information** - is data describing the location, shapes and attributes of things, and the relationship between them. It is the composite of spatial data and attribute data. Any data can be mapped. It is the integrative glue for everything.

**Geographic Information System (GIS)** – an integrated collection of computer software and data used to view and manage information geographic places, analyze spatial relationships and model spatial processes. It provides a framework for gathering and organizing spatial data and related information so that it can be displayed and analyzed.

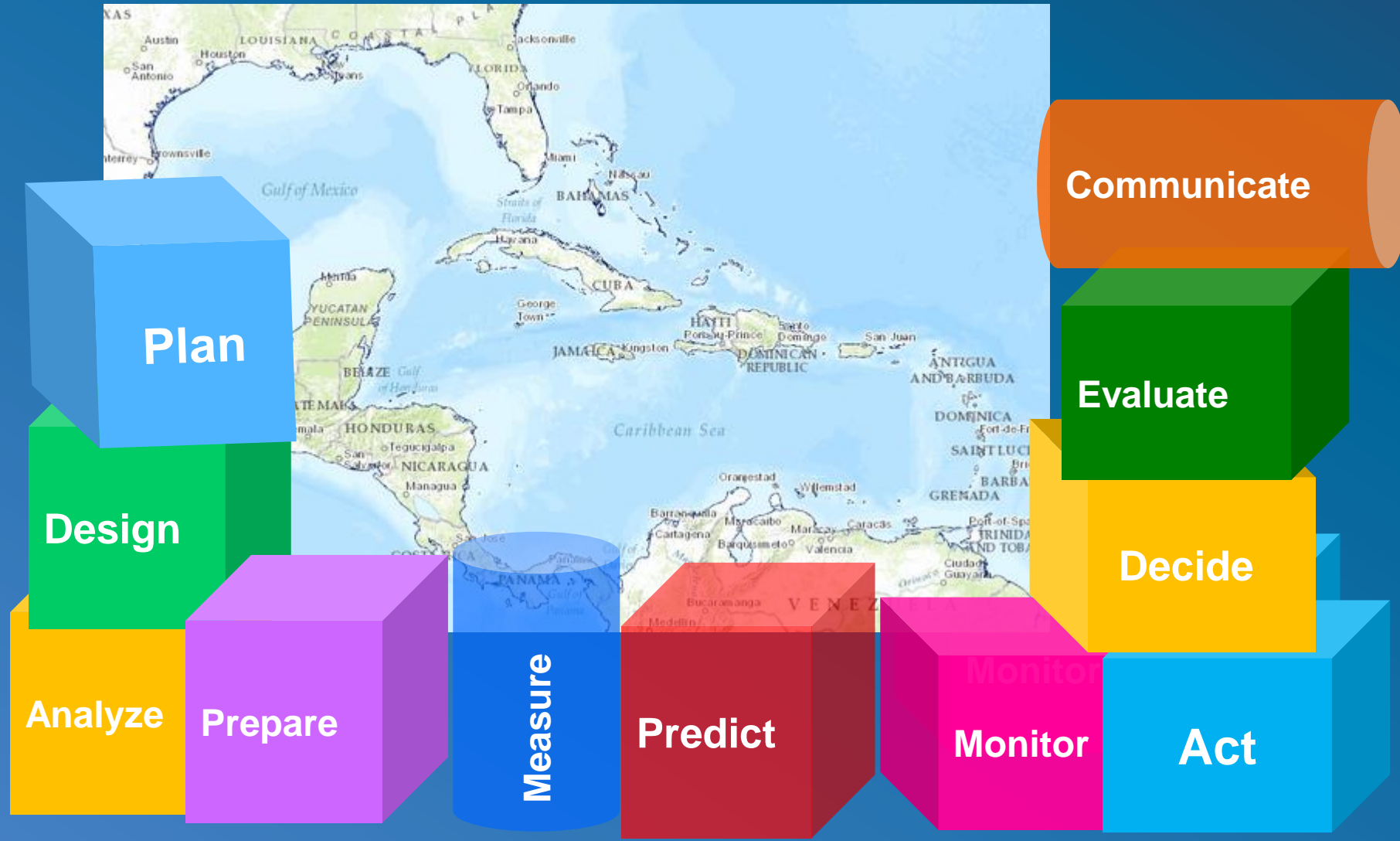


Geospatial information represents much more than the 'digital map' of a nation; it is the **'digital currency for evidence-based decision-making'**. Geospatial information is a critical component of the national infrastructure; both a blueprint of what happens where, and the means to integrate a wide variety of data across multiple sectors.





# GIS a Platform for Action



UN-GGIM

United Nations Committee of Experts on  
Global Geospatial Information Management

*Positioning geospatial information to address global challenges*

[ggim.un.org](http://ggim.un.org)

# GIS is Pervasive

**Agriculture/Forestry**

**Defense/Security**



**Urbanization**

**Congestion**

**Mining**



**Land Use**

**Development**



**Disasters**

**Tourism**

**Utilities**

**Transportation**

**Human Health**

**Education**

**Global Warming**

**Marine**

**Biodiversity**

**Water**

**Logistics**

**Business**

**Energy**

**Governance**

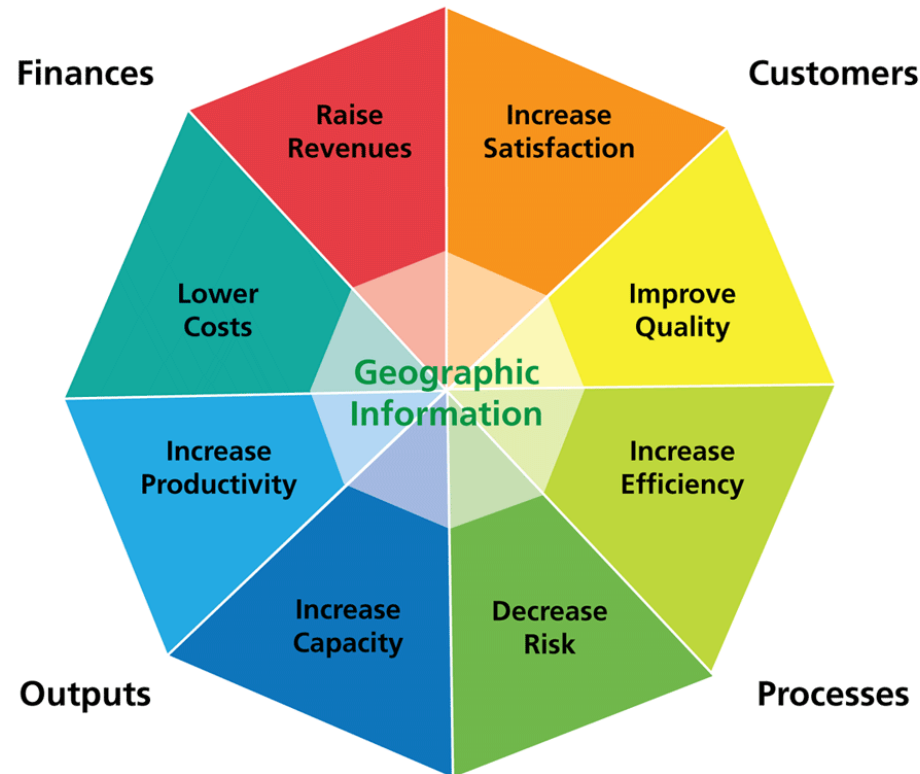
# GI and Tools – an enabler

**Bahrain** improves planning, achieved 75% reduction in service delivery times and 60% reduction in data creation and maintenance costs

**Algiers** -Improved management of water supply and draining

**Netherlands** - excavators to get accurate information on the underground-situation and helps prevent damage to cables and pipe lines; saves costs and increases efficiency.

## Benefits Spectrum



**Ecuador**- SDI facilitates emergency response, earthquake

**Brazil's** "crime maps" and tools yields 10% reduction in police incidents and 13% reduction in homicides in May 2012 compared to May 2011.

**India** plans its rural road core network, and ensures investment made at the right places

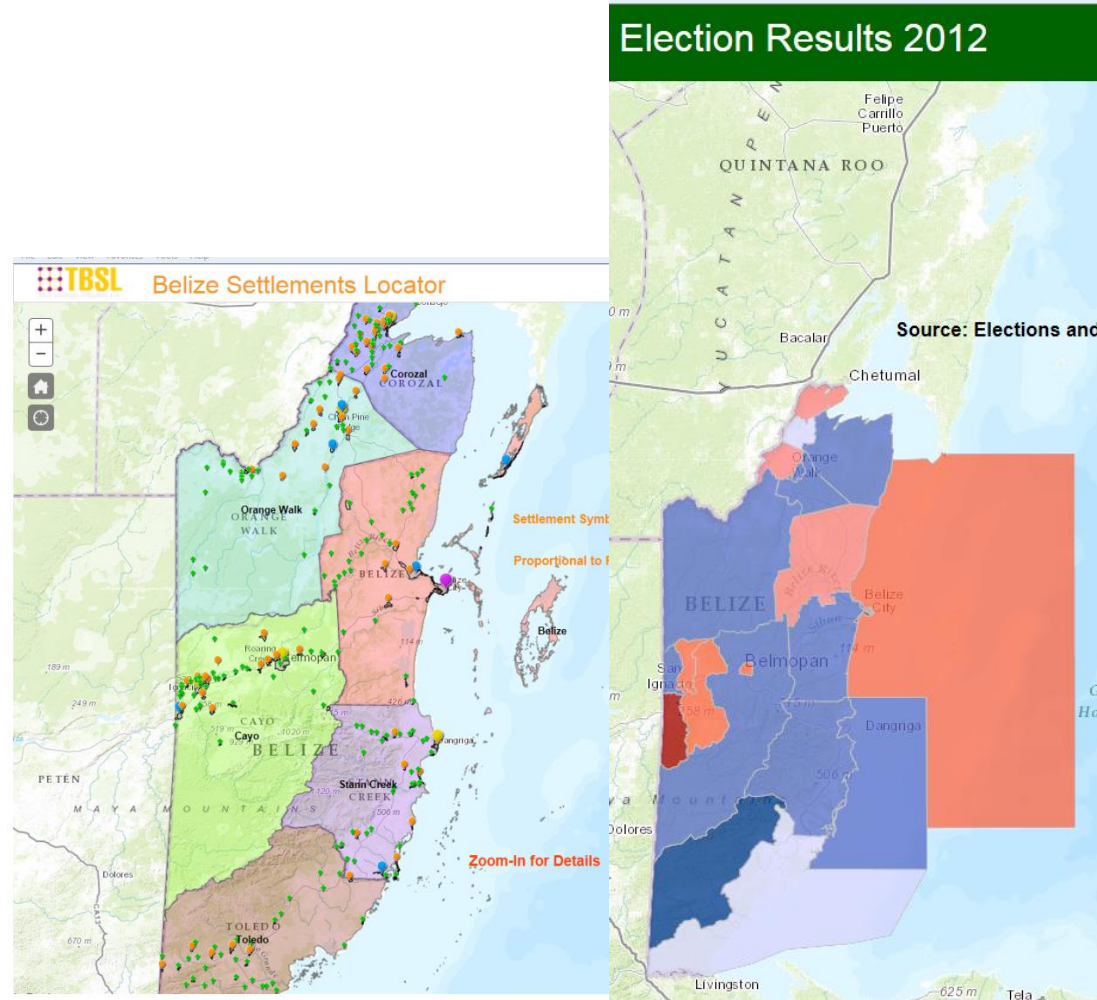




# Democratic Governance

Equity  
Good governance  
Transparency  
Collaboration & cooperation

Crowd sourcing  
Public Participation  
Data Visualization  
Open Data Access



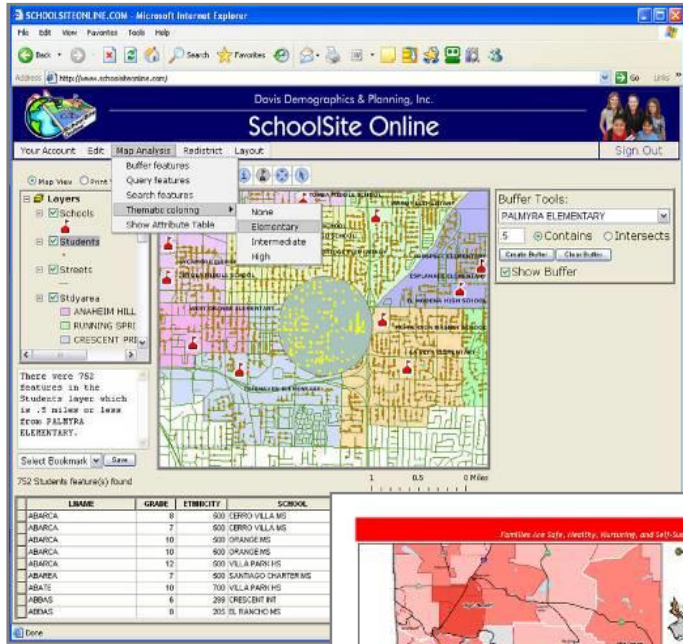
UN-GGIM

United Nations Committee of Experts on  
Global Geospatial Information Management

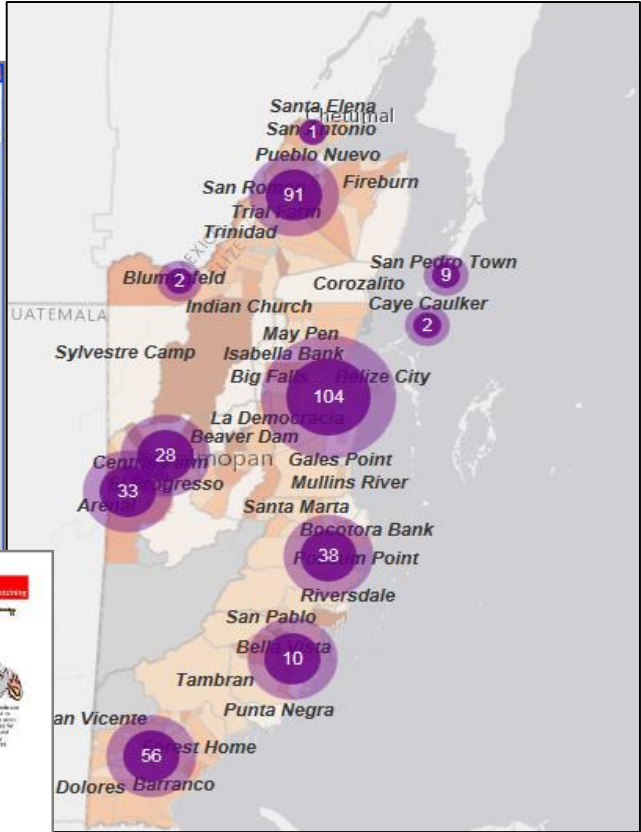
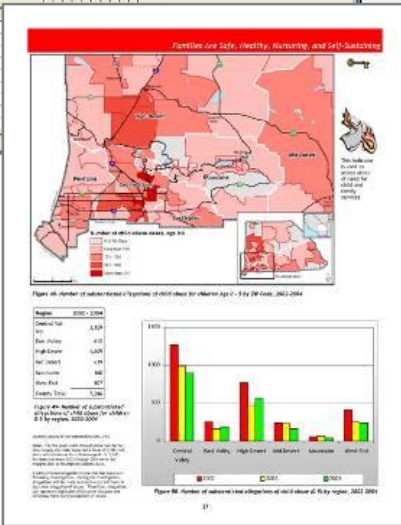
Positioning geospatial information to address global challenges  
ggim.un.org

# Education

## Online School District Planning



## Demographic Assessment



## Distribution of Schools in Belize

- Planning and site selection of new schools, libraries
- Management of education facilities and assets
- Improve the delivery of geography and social studies
- Assigning students to schools and transporting them
- Increase the number of GIS specialists





# Economic Resilience

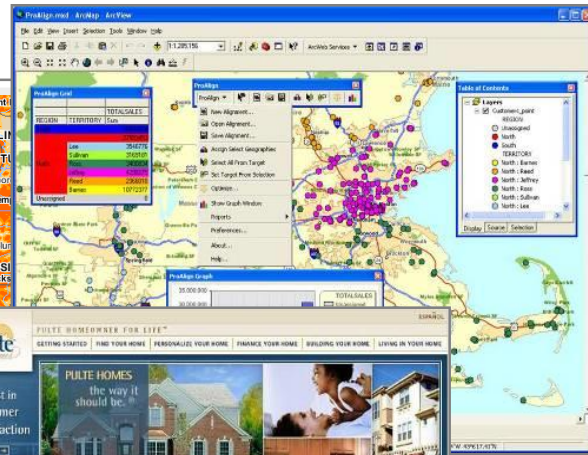
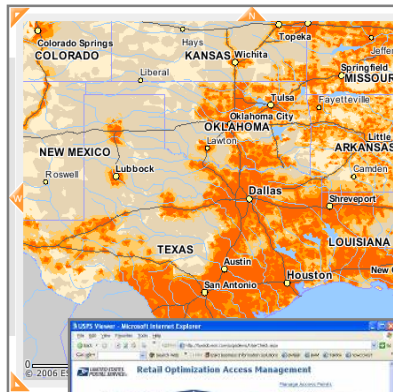
Crime Analysis

Tactical analysis

Operations Management

## Territory Analysis

### Wireless Coverage



**Pulte**  
HIGHEST IN CUSTOMER SATISFACTION

Find Your Home

Ready to Move

### Post Office Locations

### Real Estate

**Belize City-Incident Management**

Find Places

Open Incidents

- Broken Sewer Main  
21/07/13 | July 10, 2013
- Broken Sewer Main  
21/07/13 | July 10, 2013
- Broken Sewer Main  
21/07/13 | July 10, 2013

New Feature Details

Open Incident

Type Broken Sewer Main  
Date Reported 21/07/13  
Time Reported July 10, 2013  
Reported By Herman Jones  
Contact 223-1829

Frequency of Incident

Incident Type	Frequency
Fire	2
Damaged Building	2
Vehicle Accident	3
Broken Sewer Main	3
Loose Wire	5
Flooded Area	5

Belize Rural South

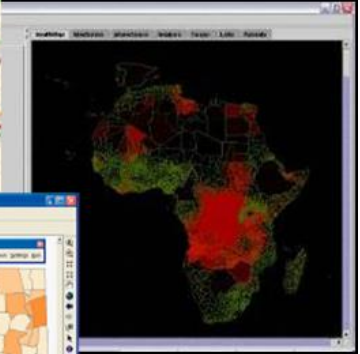
POWERED BY esri

# Healthy People

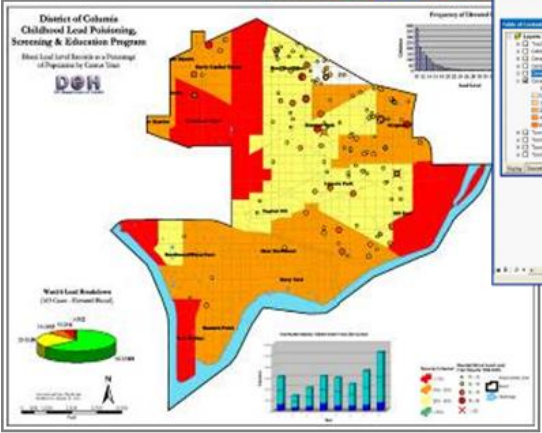
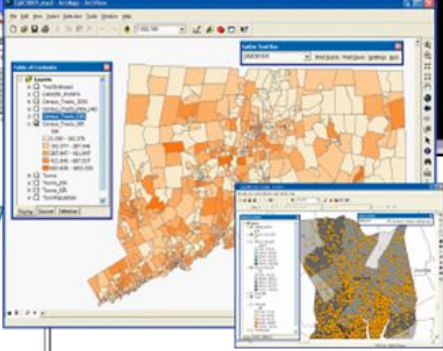
## Epidemiology



## AIDS



## Cancer





## Lead Poisoning


- Increase accessibility to services-establishing service areas
- Prevent future disease outbreaks
- Tracking of diseases – chick V, COVID-19
- Emergency response – optimal route
- Case management - address disparities in access to health care



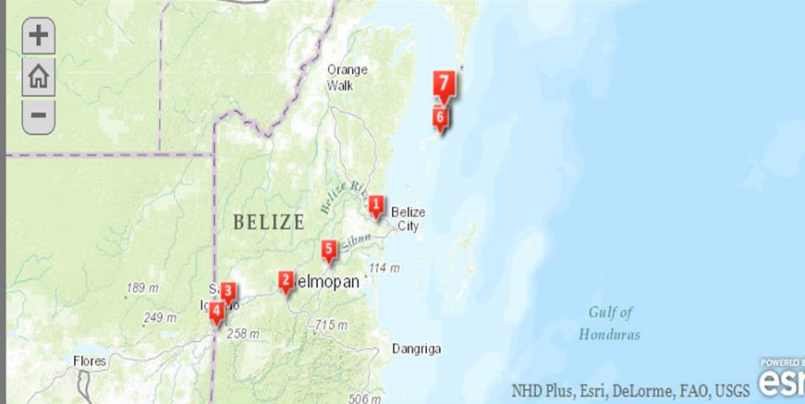
# Healthy Environment

**Belize Rainforest & Reef Tour** A story map  

Get the best of both worlds in Belize! Explore Belize's Rainforest & Reef!



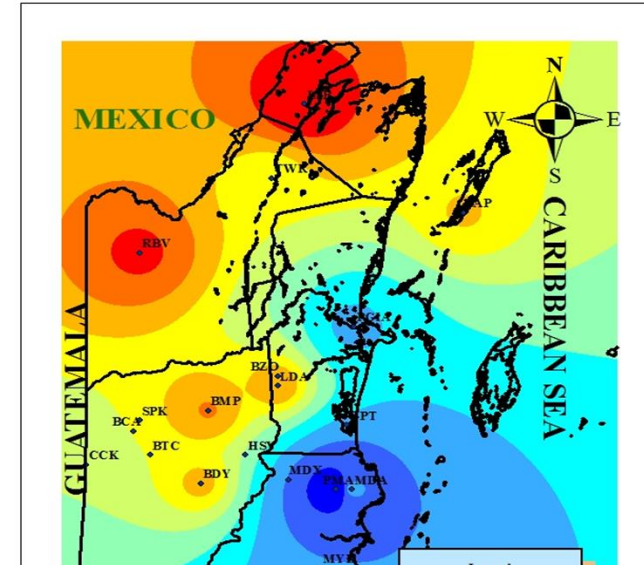
**Day 7- Reef Fishing in Ambergris Caye**  
Takes you trolling around the island or out on the reef to experience fishing at a faster pace, in search of snappers, jack groupers, and barracudas.



1 Day 1- Welcome to Belize! 2 Day 2- Zipriding 3 Day 3- Cave Exploration 4 Day 4- Xunantunich Visit 5 Day 5- Belize Zoo 6 Day 6- Hol Chan Marine Reserve 7 Day 7- Reef Fishing in Ambergris Caye 8 Day 8- Farewell

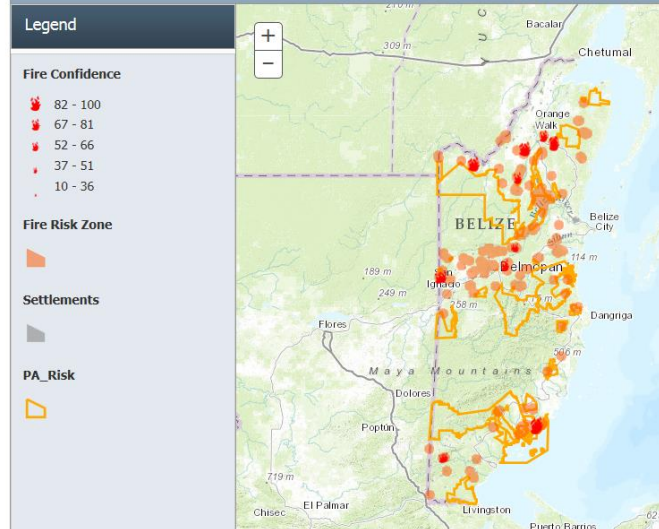
- Understanding the interdependence of the earth ecosystems and human impact
- Manage and monitor protected areas
- Disaster management, mitigation and response

## Rainfall Summary from Jun.,16-17th,2013



## Belize Fire Analysis

Displays location of PA that are at risk by outbreaks of fire.





## SECOND UNITED NATIONS WORLD GEOSPATIAL INFORMATION CONGRESS

10–14 October 2022, Hyderabad, India



### Inaugural Address by PM Shri Narendra Modi

India's development pillars are **TECHNOLOGY** and **TALENT**

**Geospatial technology is driving inclusion and progress.**

The role of technology in schemes like SVAMITVA and housing, and the outcomes in terms of **property ownership and women empowerment** have a direct impact on the **UN's Sustainable Development Goals on poverty and gender equality.**

The GatiShakti Master Plan is being powered by geospatial technology including the **Digital Ocean platform** for the management of oceans which is crucial for the environment and the marine ecosystem.

The geospatial sector has ensured the **freedom to innovate**, because **all data is free and accessible**, data have now been democratized. This has been a boost to the drone sector and the **opening up of the space sector for private participation.**

**The possibilities that geospatial technologies offers are endless. Sustainable development, managing disasters and mitigating, tracking the impact of climate change, forest management, water management, food security are done through GIS**



UN-GGIM

United Nations Initiative on  
Global Geospatial Information Management

*Positioning geospatial information to address global challenges*

[ggim.un.org](http://ggim.un.org)



# Some Challenges of Geospatial Program Development

1. Small pool of **trained geospatial personnel**
2. Need to increase the knowledge about the wider role of GIS/Geo technologies in ongoing IT developments
3. Access, sharing, dissemination and use geospatial data
4. Need for **formal institutional structures** with responsibility to coordinate and implement national geospatial information management
5. Formulate and enforce **Legislation** to govern country implementation
6. **A program versus a project approach** to GIS program development
7. **Financial support** is required to facilitate the growth of GIS



# Caribbean Geospatial Information Management



Address: http://www.caymanlandinfo.ly/index.cfm

**CAYMAN ISLANDS**  
Lands & Survey Department

NAVIGATE | 22, September 2005 | Login

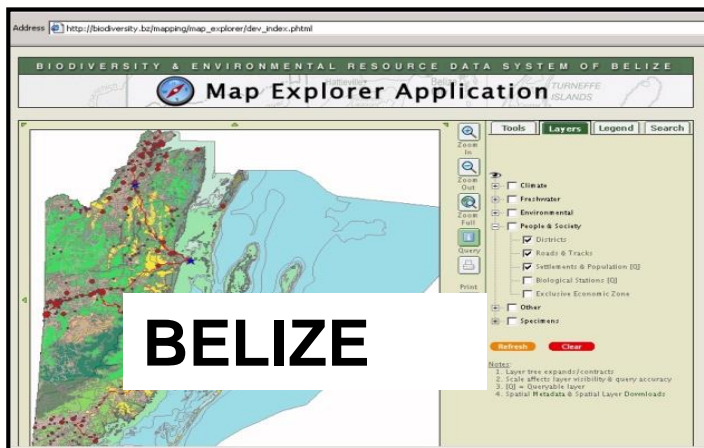
- Home
- About Us
- About Data Download
- About CAD Data
- Free Online
- Order Maps
- Subscription Options
- Professional Services
- Schools
- e Forms

NEWS

11 Latest news  
New departmental premises  
09, August 2005

Lands & Survey to move from temporary location at the Cayman Corporate Centre

**Cayman Islands**



Address: http://biodiversity.bz/mapping/map\_explorer/dev\_index.phtml

**BIODIVERSITY & ENVIRONMENTAL RESOURCE DATA SYSTEM OF BELIZE**

**Map Explorer Application**

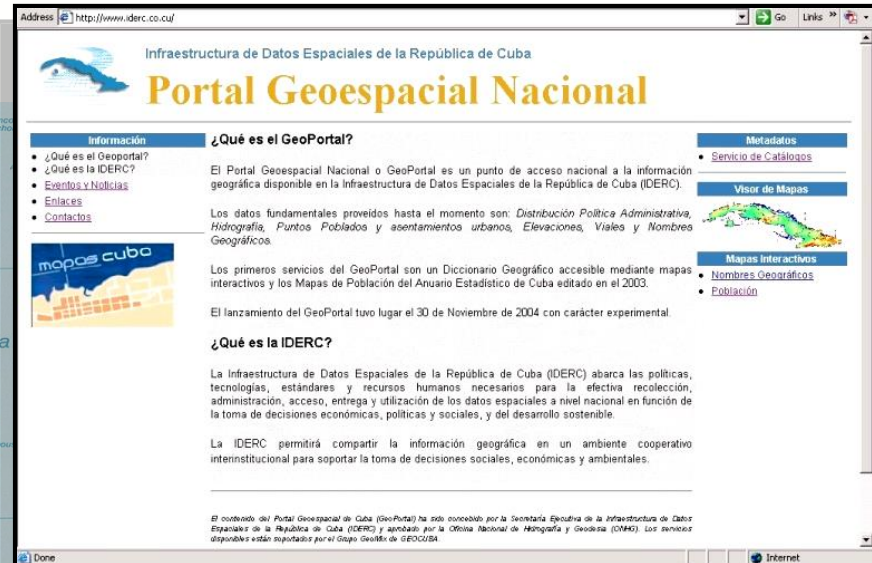
**BELIZE**

Tools | Layers | Legend | Search

- Clear
- Fullscreen
- Environmental
- People & Society
- Districts
- Roads & Tracks
- Settlements & Population (D)
- Biological Station (B)
- Exclusive Economic Zone
- Other
- Specimens

Notes:

- Layer tree expand/collapse
- Scale affects layer visibility & query accuracy
- SQL = Queryable layer
- Spatial Metadata & Spatial Layer Downloads



Address: http://www.iderc.cu/

Infraestructura de Datos Espaciales de la República de Cuba

## Portal Geoespacial Nacional

**Información**

- ¿Qué es el GeoPortal?
- ¿Qué es la IDERC?
- Eventos y Noticias
- Enlaces
- Contactos

**¿Qué es el GeoPortal?**

El Portal Geoespacial Nacional o GeoPortal es un punto de acceso nacional a la información geográfica disponible en la Infraestructura de Datos Espaciales de la República de Cuba (IDERC).

Los datos fundamentales proveídos hasta el momento son: *Distribución Política Administrativa, Hidrografía, Puntos Poblados y asentamientos urbanos, Elevaciones, Viales y Nombres Geográficos.*

Los primeros servicios del GeoPortal son un Diccionario Geográfico accesible mediante mapas interactivos y los Mapas de Población del Anuario Estadístico de Cuba editado en el 2003.

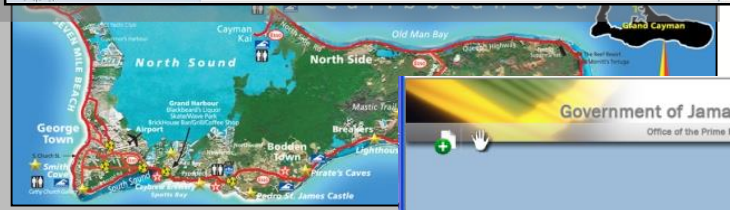
El lanzamiento del GeoPortal tuvo lugar el 30 de Noviembre de 2004 con carácter experimental.

**¿Qué es la IDERC?**

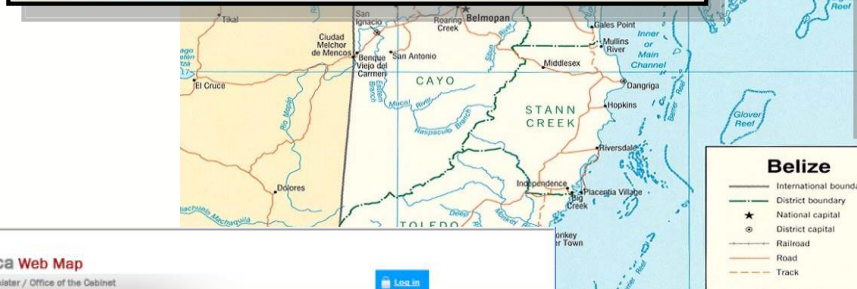
La Infraestructura de Datos Espaciales de la República de Cuba (IDERC) abarca las políticas, tecnologías, estándares y recursos humanos necesarios para la efectiva recolección, administración, acceso, entrega y utilización de los datos espaciales a nivel nacional en función de la toma de decisiones económicas, políticas y sociales, y del desarrollo sostenible.

La IDERC permitirá compartir la información geográfica en un ambiente cooperativo interinstitucional para soportar la toma de decisiones sociales, económicas y ambientales.

El contenido del Portal Geoespacial de Cuba (GeoPortal) ha sido concebido por la Secretaría Ejecutiva de la Infraestructura de Datos Espaciales de la República de Cuba (IDERC) y aprobado por la Oficina Nacional de Hidrografía y Geodesia (ONAG). Los servicios disponibles están reportados por el Grupo Geográfico de GEOCUBA.



Map of the Cayman Islands showing North Sound, North Side, Old Man Bay, and other geographical features.



Map of Belize showing major cities like Belmopan, San Ignacio, and San Antonio, and geographical features like the Caribbean Sea and Stann Creek.



**CUBA**

Map of Cuba showing major cities like Havana, Varadero, Sagua la Grande, and Santiago de Cuba, and geographical features like the Caribbean Sea and Atlantic Ocean.



Government of Jamaica Web Map

Office of the Prime Minister / Office of the Cabinet

**JAMAICA**

Map of Jamaica showing major cities like Kingston, Spanish Town, and Montego Bay, and geographical features like the Caribbean Sea.



GeoNetwork

Search results for Jamaica:

- Hurricane Tracks 1988 to 2000**  
Abstract: Storm Track from NOAA (1988-2000) near Jamaica.  
Keywords: Historical Storm Track of Jamaica.
- Discharge Facilities**  
Abstract: Discharge Facilities of Jamaica (North from Montego Bay).  
Keywords: REQUIRED: Content use word or phrase used to describe the subject of the data set.
- Elev Stations**  
Abstract: Elev Stations of Jamaica (Contact Information).  
Keywords: REQUIRED: Content use word or phrase used to describe the subject of the data set.
- Hospitals**  
Abstract: Hospitals of Jamaica (Health from Hillside Thomas).  
Keywords: REQUIRED: Content use word or phrase used to describe the subject of the data set.



address global challenges



# Caribbean – some GIM Initiatives

- **Bahamas** National GIS Centre (1998), NSDI Legislation passed
- **Belize** Land Information Centre (LIC)
- **BVI** National GIS - Freedom of information legislation
- **Cayman Islands** Land Information System
- Infraestructura de Datos Espaciales de la **República de Cuba** (initiated in 2000)
- **Dominican Republic** - Centro Nacional de Geoinformatica
- **Jamaica** Land Information Council - celebrating 30 years this year.
- **Guyana** - Recommendations for a National Policy on Geographic Information
- **St. Lucia** Demographic Yearbook - Dissemination Of Demographic Statistics / Institute of Surveyors St. Lucia Incorporated



11/23/2022

UN-GGIM

United Nations Initiative on  
Global Geospatial Information Management

*Positioning geospatial information to address global challenges*

[ggim.un.org](http://ggim.un.org)

# Strengthening GIM in the Caribbean 2014- 2018, Outcomes

Business Unit: Caribbean Project		Strategic option:			STRENGTHEN			
Strategic Objective		Strategies		Indicators Tracing	GOALS / Specific objectives			
					minimum	medium	optimum	Actual
1	<u>Strengthen the geodetic network</u>	Increase stations	Increase number of stations	5% further in the region	3%	5%	10%	More than 10%
			Increase data availability					
			Increase security location					
2	<u>Broadcast Geographic Information</u>	Create Digital Map of the Caribbean	Increase number of geoportals	10% further in the region	5%	10%	15%	5%
			Increase dissemination of G.I.					
			Increase the number of users					
3	<u>Promote the use of G. I.</u>	Construct Land Cover Map	Consider Project countries	90% of the coverage for the region	80%	90%	100%	100%
			Ensure the quality of the project					
			Disseminate results by geoportal					
4	<u>Capacity Building</u>	Training in geographic skills	Increase basic skills	90% of participations for the countries in the project	80%	90%	100%	80%
			Increase intermediate skills					
			Increase transversal competences					
5	<u>Using geographical standards</u>	Apply standards in processes	Increase in production processes	20% of processes	10%	20%	30%	20%
			Increase in integration processes					
			Increase in dissemination processes					
6	<u>Update computer technology</u>	Renew computers	Update servers	2% of equipment available	1%	2%	3%	More than 3%
			Update computers					
			Update network equipment					
7	<u>Geographic Metadata</u>	Promote the Application	Define a profile for the Region	20% of the countries in the project	10%	20%	30%	Less than 10%
			Train them on application					
			Implement use					



# A Global Geospatial Mandate

At its 47<sup>th</sup> plenary in July 2011, ECOSOC, recognizing the importance of global geospatial information, established the **Committee of Experts on Global Geospatial Information Management (UN-GGIM)**, and:

- Requested the Committee to present to ECOSOC in 2016 a comprehensive review of all aspects of its work and operations, in order to allow Member States to assess its effectiveness.
- Encouraged Member States to hold regular high-level, multi-stakeholder discussions on global geospatial information, including through the convening of global forums, with a view to promoting a comprehensive dialogue with all relevant actors and bodies.

## Resolution

2011/24

### Committee of Experts on Global Geospatial Information Management

*The Economic and Social Council,*

1. *Takes note* of the report of the Secretary-General on global geospatial information management<sup>3</sup> and the recommendations contained therein;
2. *Recognizes* the need to promote international cooperation in the field of global geospatial information;
3. *Decides*, in this regard, to establish the Committee of Experts on Global Geospatial Information Management, in accordance with the terms of reference contained in the annex to the present resolution, to be established and administered within existing resources and organized accordingly, and requests the Committee to present to the Economic and Social Council in 2016 a comprehensive review of all aspects of its work and operations, in order to allow Member States to assess its effectiveness;
4. *Encourages* Member States to hold regular high-level, multi-stakeholder discussions on global geospatial information, including through the convening of global forums, with a view to promoting a comprehensive dialogue with all relevant actors and bodies;
5. *Emphasizes* the importance of promoting national, regional and global efforts to foster the exchange of knowledge and expertise, to assist developing countries in building and strengthening national capacities in this field.

[http](http://ggim.un.org)

*47th plenary meeting  
27 July 2011*



UN-GGIM

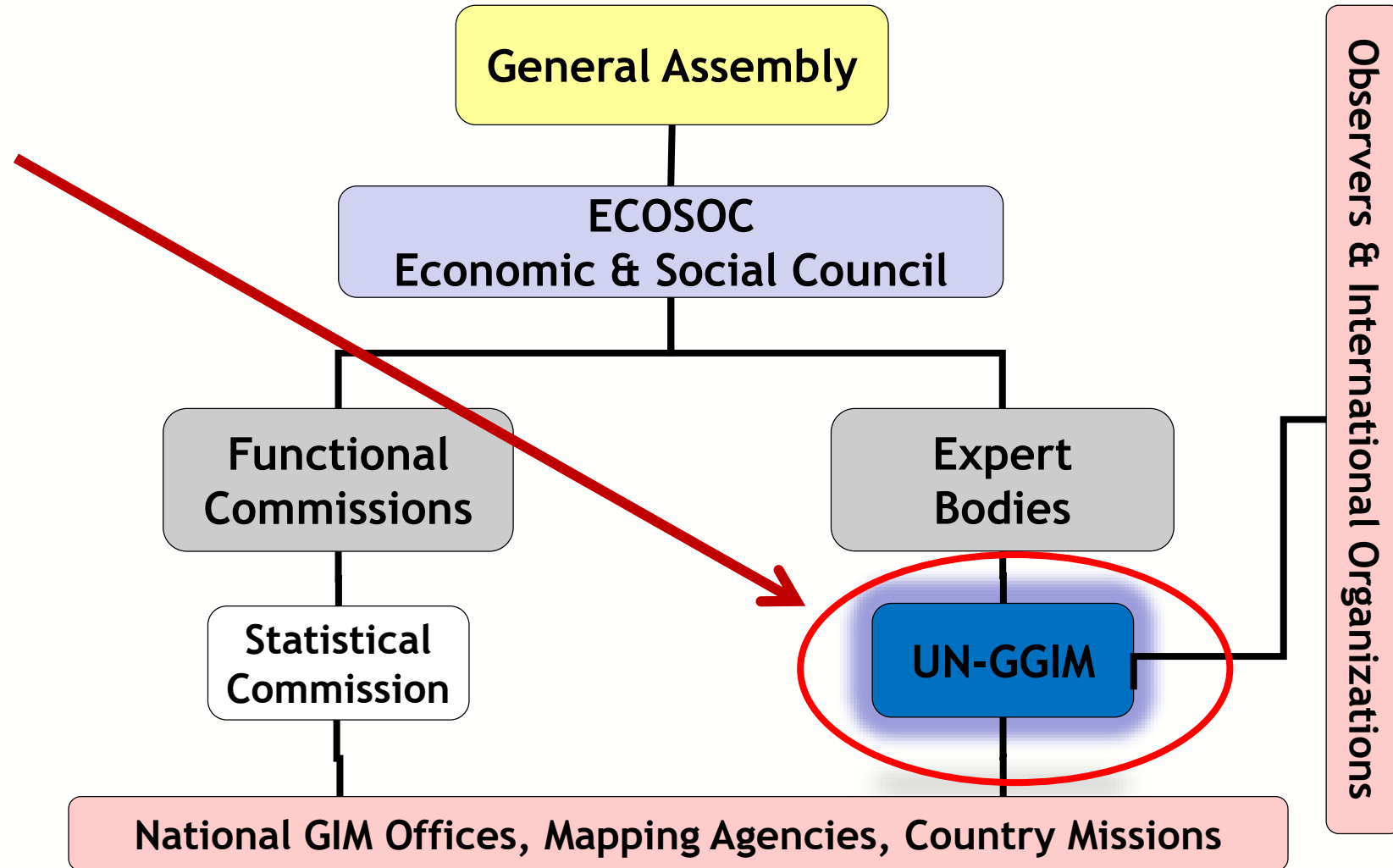
United Nations Secretariat  
Global Geospatial Information Management

*Positioning geospatial information to address global challenges*

[ggim.un.org](http://ggim.un.org)

[ggim.un.org](http://ggim.un.org)

# UN-GGIM: An Inter-Governmental Body





# Global Context - UN-GGIM

Formal inter-governmental **UN Committee of Experts** to:

- **Enhance and coordinate** Global Geospatial Information Management activities
- **Make joint decisions and set directions** on the use of geospatial information
- Work with Governments to **improve policy, institutional arrangements, and legal frameworks**
- Address global issues and **contribute collective knowledge**
- Develop effective strategies to **build geospatial capacity** in developing countries



UN-GGIM

United Nations Initiative on  
Global Geospatial Information Management

Positioning geospatial information to address global challenges

[ggim.un.org](http://ggim.un.org)

# UN-GGIM: What do we do?

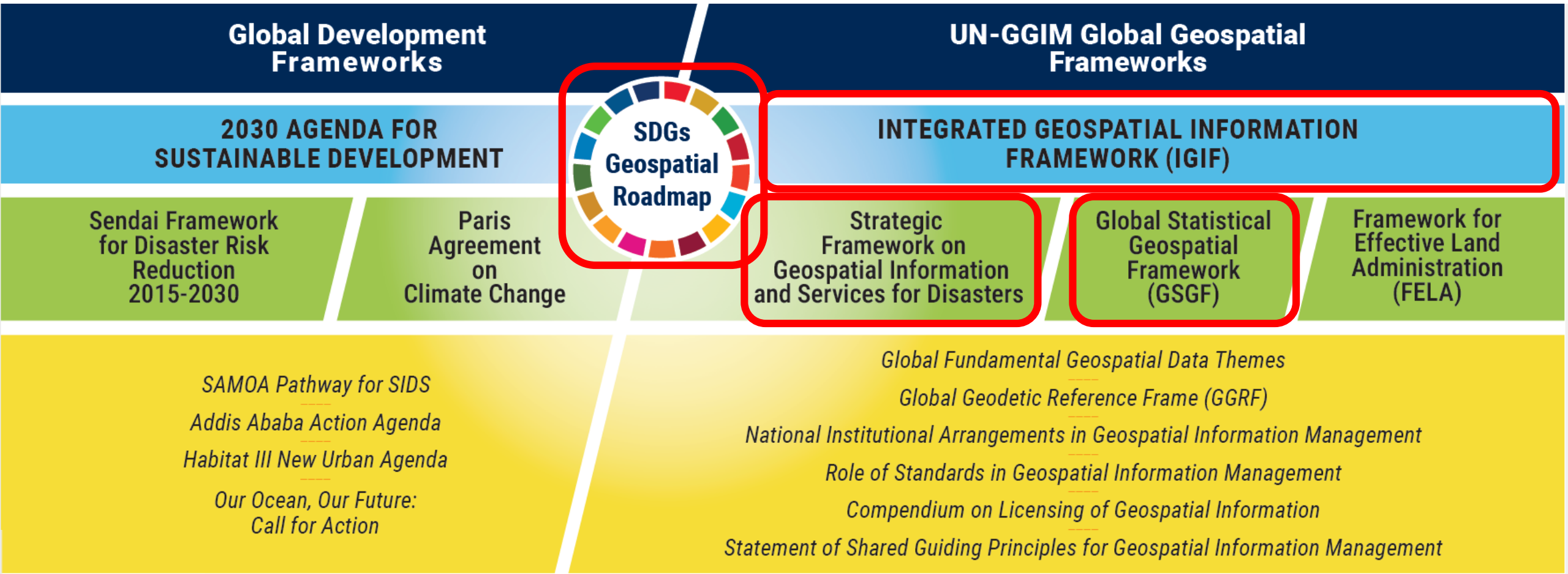
## Some Work Items

1. A global **geodetic reference framework**,
2. Adoption and implementation of **standards**
3. Determining global **fundamental data sets**
4. Geospatial information **supporting Sustainable Development** and the post 2015 development agenda
5. **Integrating geospatial, statistics** and other data
6. **Legal and policy** frameworks
7. **Land Administration** and Management
8. **Disaster risk reduction** and resiliency
9. **Marine** geospatial information
10. **Integrated Geospatial Information Framework**

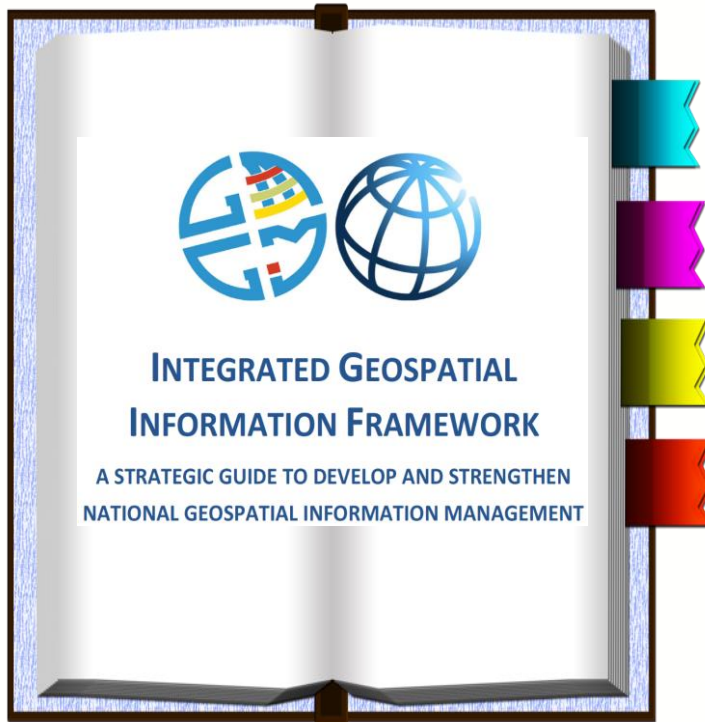




# Global Development Frameworks and UN-GGIM



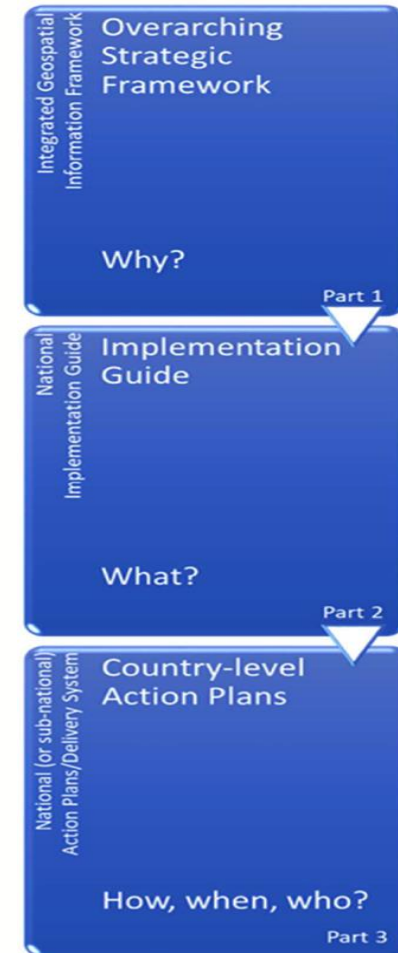
# The IGIF Documents



A three-part document set of connected, documents.  
The **Overarching Strategic Framework** is fully developed

The **Implementation Guide** structure and main elements are developed and structure approved in-principle.

The **Country-level Action Plans** are work in progress.



<http://ggim.un.org/IGIF/>



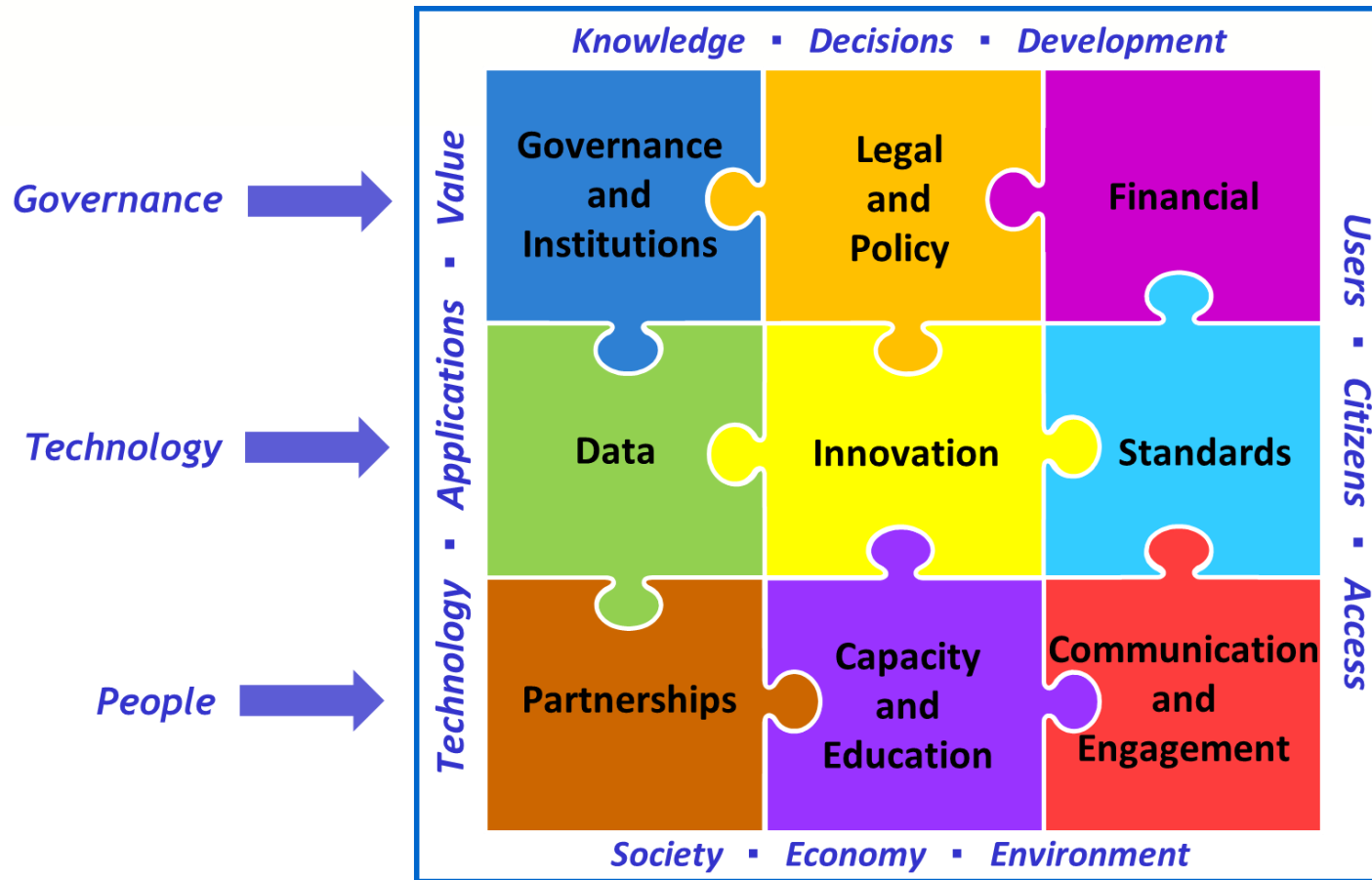
UN-GGIM

United Nations Initiative on  
Global Geospatial Information Management

*Positioning geospatial information to address global challenges*

ggim.un.org

# Nine Strategic Pathways

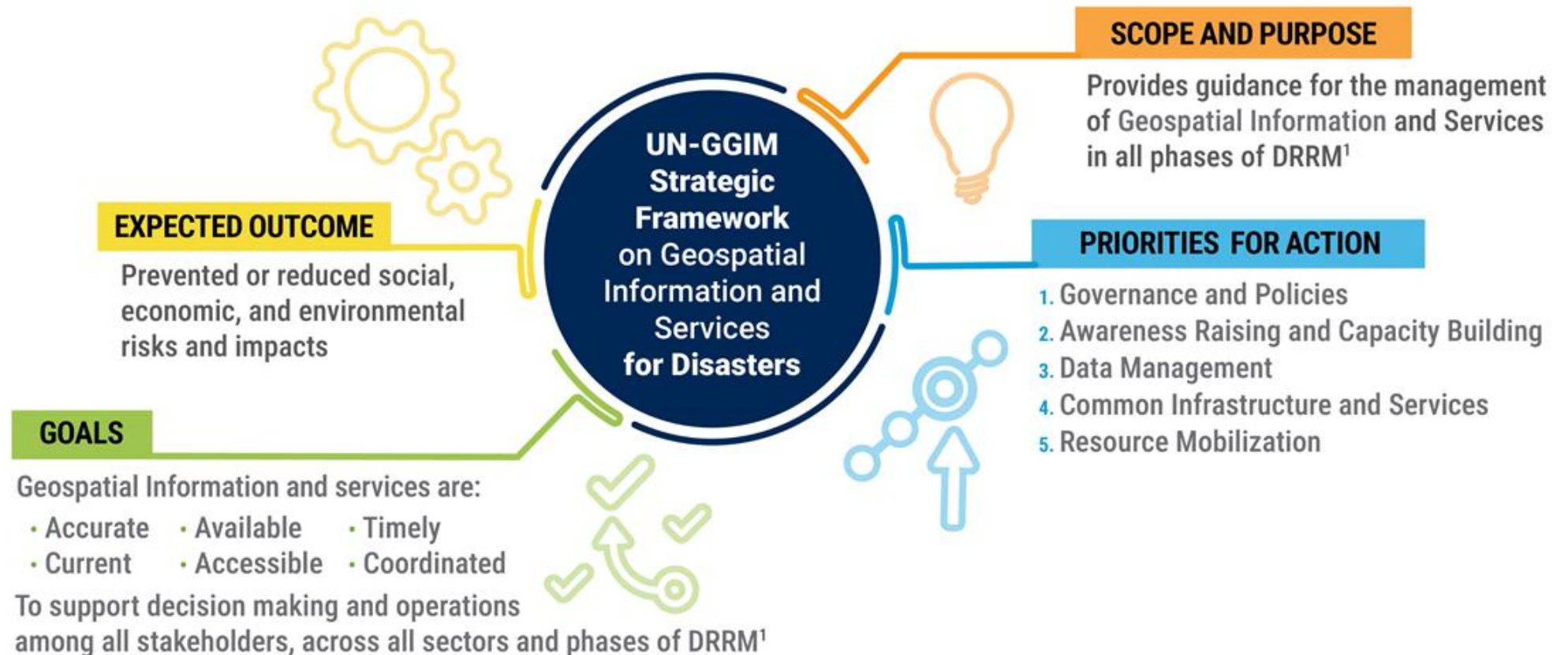


Anchored by 9 Strategic Pathways, the Framework is a mechanism for articulating and demonstrating national leadership in geospatial information, and the capacity to take positive steps.





# Strategic Framework on Geospatial Information and Services for Disasters



<sup>1</sup> Disaster risk reduction and management (DRRM)



# Priorities for Action

1.



## Governance and Policies

- Data Sharing
- Collaboration, coordination and partnerships
- Open channels of communication

2.



## Awareness Raising and Capacity Building

- Multi-sectoral training & education
- Research
- Benchmark best practices

3.



## Data Management

- Data standards and protocols
- Data development
- Security, privacy and safety

4.



## Common Infrastructure and Services

- Standards and interoperability
- Common operations centre
- Hardware, software, network, applications, models

5.



## Resource Mobilization

- Funding and investment



UN-GGIM

United Nations Initiative on  
Global Geospatial Information Management

*Positioning geospatial information to address global challenges*

[ggim.un.org](http://ggim.un.org)

# Global Statistical Geospatial Framework (GSGF)



## PRINCIPLES

- Accessible & usable
- Statistical and geospatial interoperability
- Common geographies for dissemination of statistics
- Geocoded unit record data in a data management environment
- Use of fundamental geospatial infrastructure and geocoding

## KEY ELEMENTS

Standards and Good Practices

National Laws and Policy

Technical Infrastructure

Institutional Collaboration

## INPUT

### Geospatial

- Fundamental data
- Supplementary data
- New data sources

### Statistical

- Censuses
- Surveys
- Administrative data records
- Big data and other sources

## OUTPUT

Integration

Harmonised and standardised information

Interoperability Comparability

Analysis

Diffusion

Decision making

[https://ggim.un.org/meetings/GGIM-committee/9th-Session/documents/The\\_GSGF.pdf](https://ggim.un.org/meetings/GGIM-committee/9th-Session/documents/The_GSGF.pdf)



UN-GGIM

United Nations Secretariat  
Global Geospatial Information Management

Positioning geospatial information to address global challenges

ggim.un.org





# SDGs GEOSPATIAL ROADMAP

**Developed by the IAEG-SDGs' Working Group  
on Geospatial Information (WGGI)**



UN-GGIM

United Nations Secretariat  
Global Geospatial Information Management

*Positioning geospatial information to address global challenges*

[ggim.un.org](http://ggim.un.org)

# The Regional Response

<http://www.un-ggim-americas.org/en/inicio.html>



UNITED NATIONS



THE UNIVERSITY  
OF THE  
WEST INDIES



UN-GGIM

United Nations Initiative on  
Global Geospatial Information Management

*Positioning geospatial information to address global challenges*

[ggim.un.org](http://ggim.un.org)



# CARIGEO

Caribbean Geospatial  
Development Initiative

GEO-EMPOWERING THE CARIBBEAN

## OBJECTIVE



**To improve Spatial Data Infrastructures at the national and regional levels in the Caribbean**

- building on recent and on-going developments*
- leveraging indigenous skills and resources*
- utilising external resources and technical expertise*

**Bridging the Geospatial Divide**



UN-GGIM

United Nations Initiative on  
Global Geospatial Information Management

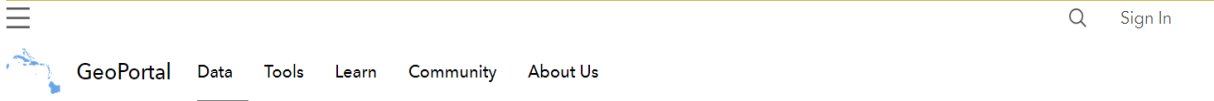
*Positioning geospatial information to address global challenges*

[ggim.un.org](http://ggim.un.org)



# The Caribbean GeoPortal

<https://www.caribbeangeoportal.com/>



## Caribbean Living Atlas

The Caribbean GeoPortal is home to hundreds of ready to use datasets. Some provided by Esri, others by users and Caribbean focused organizations. Mix this data with your own to build a bigger picture. Find answers and make better decisions.

## Explore the Data

Using the search bar and filtering options, you can explore the dynamic content of the Living Atlas. If you are signed in, you can preview the data, and bookmark interesting datasets by clicking on the blue star. You'll know its referenced when the blue star turns yellow. Once you have bookmarked interesting datasets as your favorites you can work with them later in the Map, where you create and share maps you create!

Enter search terms

Grid Relevance Filter

GeoPortal Data Tools Learn Community About Us

## Disaster Response

During a time of crisis, having access to the most current and authoritative data can be the difference between life and death. Whether the crisis is caused by storms, earthquakes, or disease; the Caribbean GeoPortal will provide the necessary data and application templates to help our community respond.



### COVID-19

See how the region is monitoring the spread of COVID-19 and view detailed country information on available dashboards. Explore the different templates and solutions that are available to help your community, or if you need more you can request help from the Esri Disaster Response Program.

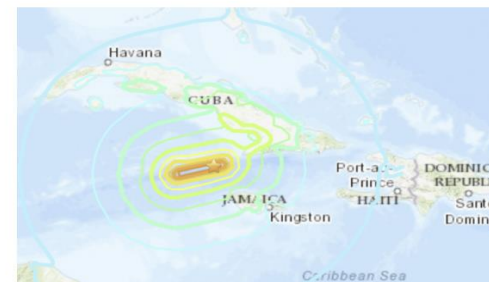
[COVID-19 Page](#)

GeoPortal Data Tools Learn Community About Us

## Hurricane and Cyclones

This map describes the current & recent location of tropical storms, as well as forecast positions and probable track of tropical storms. The areas currently covered by the live feeds are the Atlantic and Eastern Pacific, the Central Pacific (Hawaii, etc.), and the Western Pacific and Indian Ocean. The data sources are the National Hurricane Center, Central Pacific Hurricane Center and Joint Typhoon Warning Center.

[Open the App](#)



## Recent Earthquakes Layer

This service presents recent earthquake information from the USGS Prompt Assessment of Global Earthquakes for Response (PAGER) program. In addition to displaying earthquakes by magnitude, this service also provide earthquake impact details. Impact is measured by population as well as models for economic and fatality loss. For more details, see: PAGER Alerts. Events are updated as frequently as every 5 minutes.

[View the Layer](#)

# For consideration going forward

1. Recognizing the value and importance of geospatial data, geostatistical data and Earth observation and its management in strengthening the economic, social and environmental development priorities of member Countries.
1. The role of ECLAC as Technical Secretariat of the UNGGIM, Regional Committee for Latin America and the Caribbean to support member countries in the strengthening and or development of geospatial information management through:
  - capacity building initiatives at the management and technical levels
  - geospatial governance arrangements,
  - the adoption/adaption of standards, and
  - the collection and management of geospatial and geostatistical data in support of monitoring and management sustainable development goals.
2. How do we encourage countries to develop and implement collaborative geospatial information management models that will serve to facilitate the sharing and exchange of data, working practices, methodologies, technical expertise among public, academic and private organizations, with the purpose of leveraging limited resources while adding value and generating the necessary knowledge to make informed policies and decisions, in support of sustainable social, economic and environmental development including disaster risk management

# Invitation to sit at the Regional Global Ecosystem table



## Some agenda items

- New tools for the dissemination of regional geospatial information
- Situation, needs and challenges of Member States
- Implementing the Integrated Geospatial Information Framework – a workshop
- Regional collaboration
- Looking at the future
- Global Statistical and Geospatial Framework Workshop
- The Strategic Framework for Geospatial Information and Services for Disasters





**UN-GGIM**

UNITED NATIONS  
COMMITTEE OF EXPERTS ON  
GLOBAL GEOSPATIAL  
INFORMATION MANAGEMENT

UN-GGIM Secretariat  
United Nations  
New York

<http://ggim.un.org/default.html>

@UNGGIM

blake1@un.org

A white rectangular sticky note is pinned to the background with a red pushpin at the top center. The words "THANK YOU" are written on the note in a large, black, handwritten font. The note is slightly tilted and has a soft shadow beneath it.